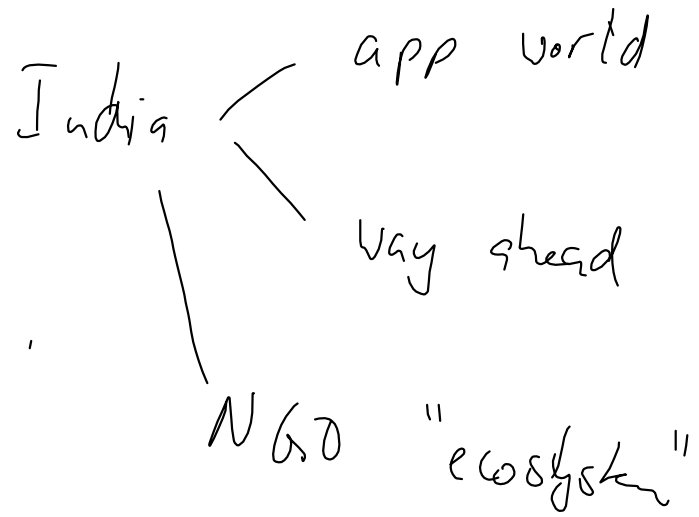


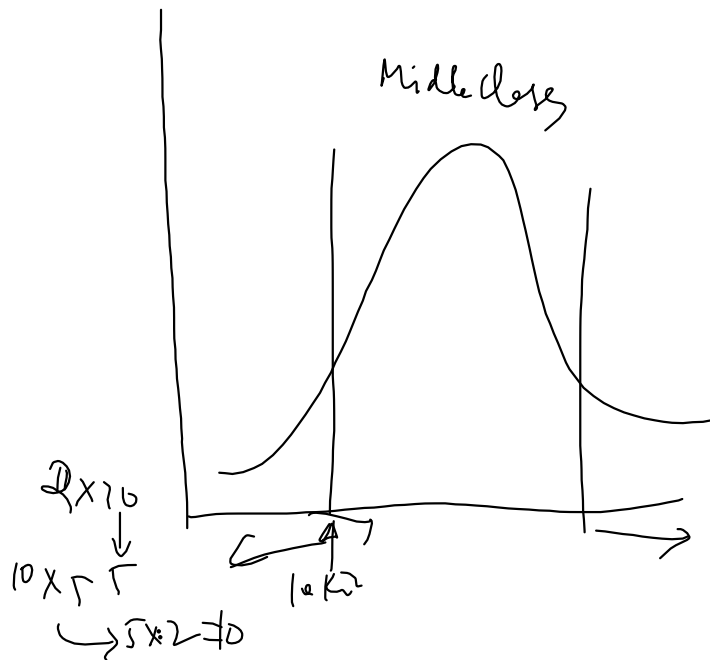
status ✓



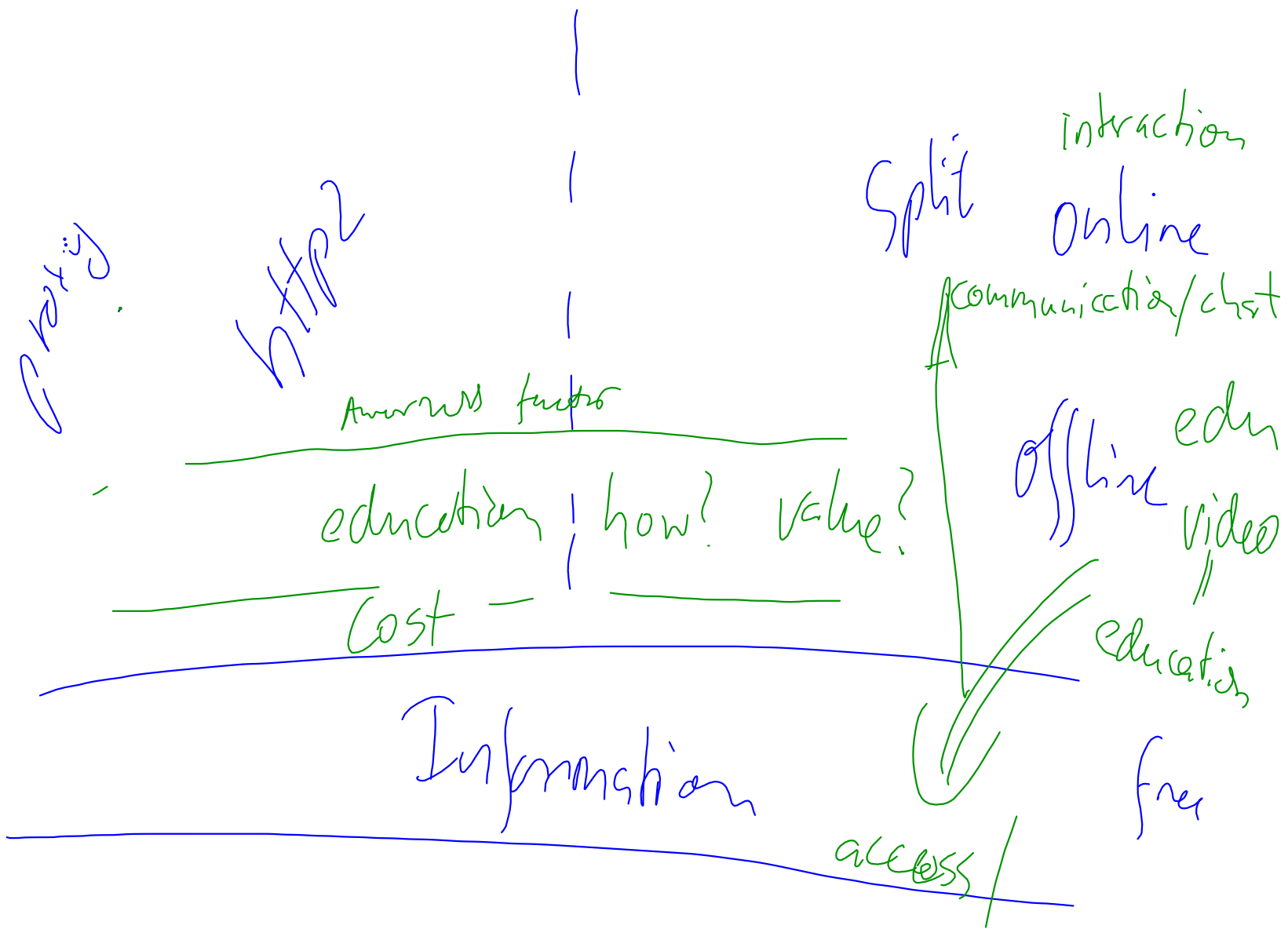
Sudhir Dittit ~17 Jan

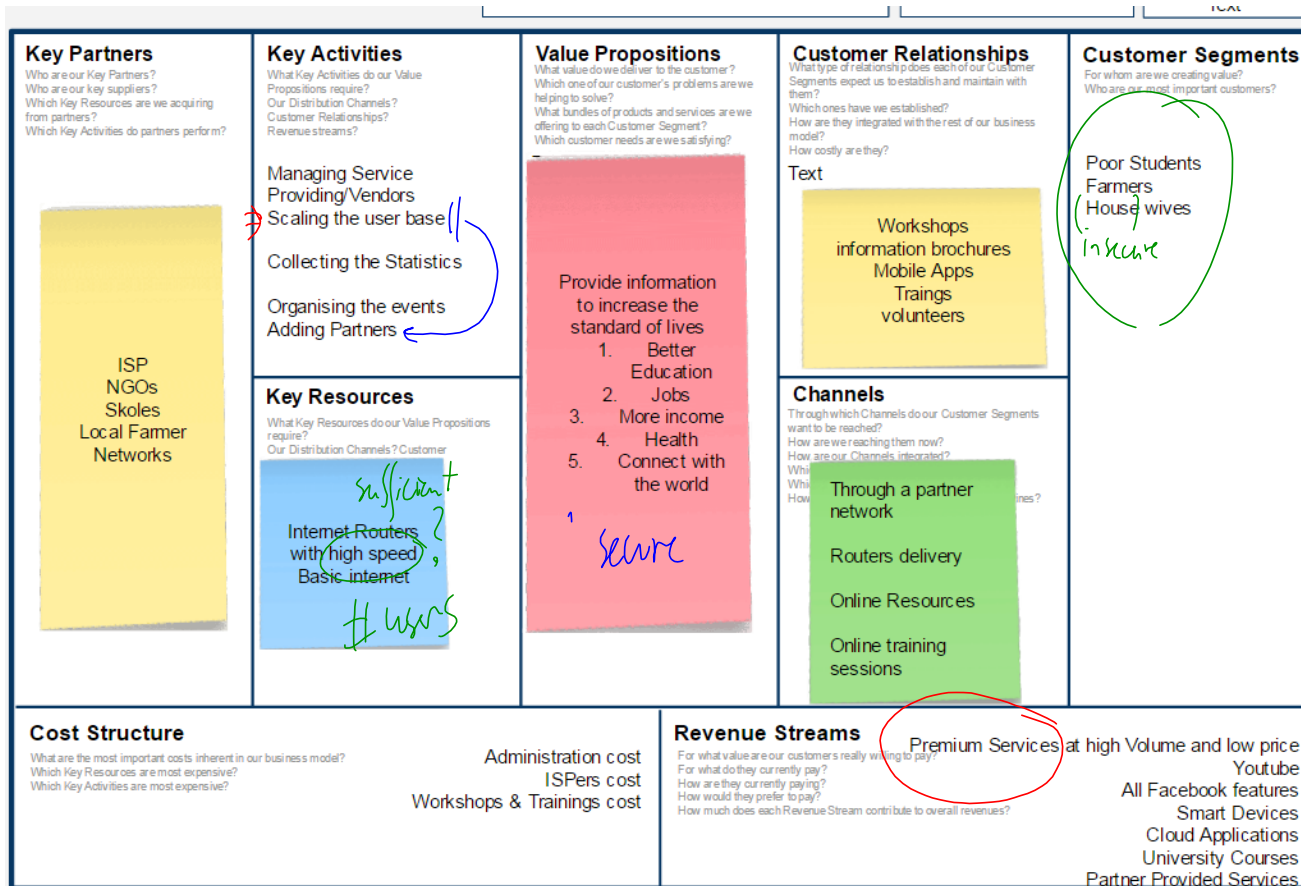
Fractline ... CEO Anotel 25-7-2018
Telcom T2

best stats you've ever seen | Hans Rosling

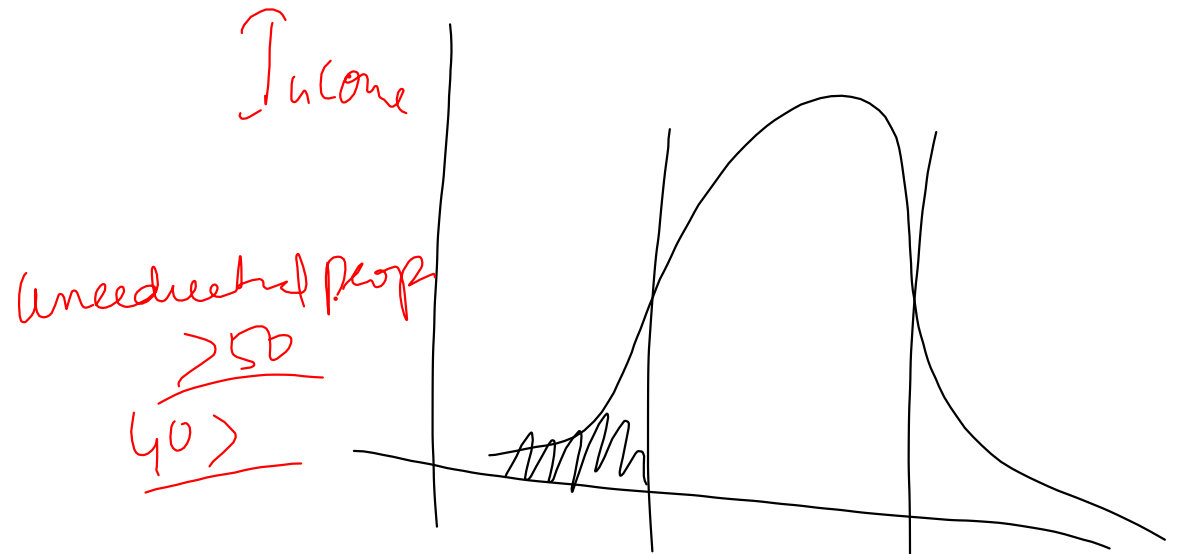


2052
Jørgen Randers



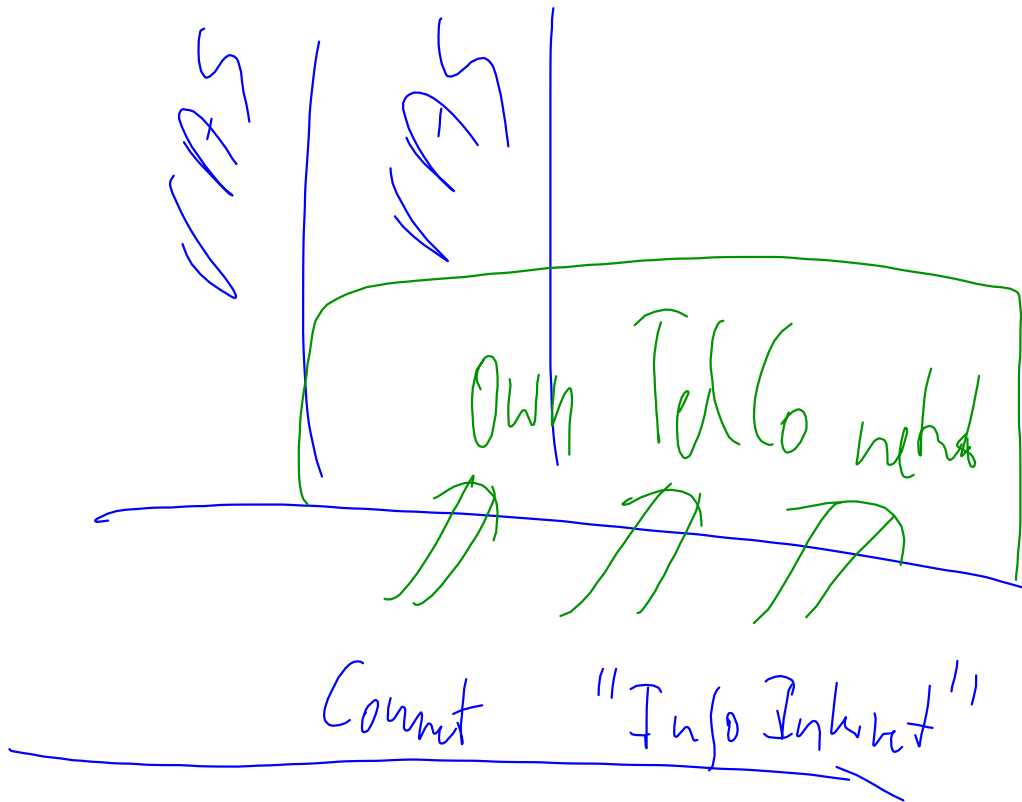


Improve the lives of the people at the bottom of the pyramid



< 50 age
 no awareness
 → health centre
 → school → kids → mothers
 agriculture
 "product information"

2480x1240
 ↓
 video
 resolution 640x480
 fps/speed 20 fps
 bytes
 info



1. Vo Wifi
not yours

2. Revenue
 ↳ service revenue

 partner infrastructure
 NBO + ...

Core question

Pilot

L

User group

agriculture
house women
students

L

"allowance to operate"

legal framework

delay

result

I. students

- private schools ✓

- public school
- poor students

Operation

Services ^{auth.}
~~Information~~
~~Content~~

Portal

edu

Smart
City

Finance

health

Process
for approval

- level D

- level C

- level B ^{video 3m}

InfoIcknut
(fundamentals)

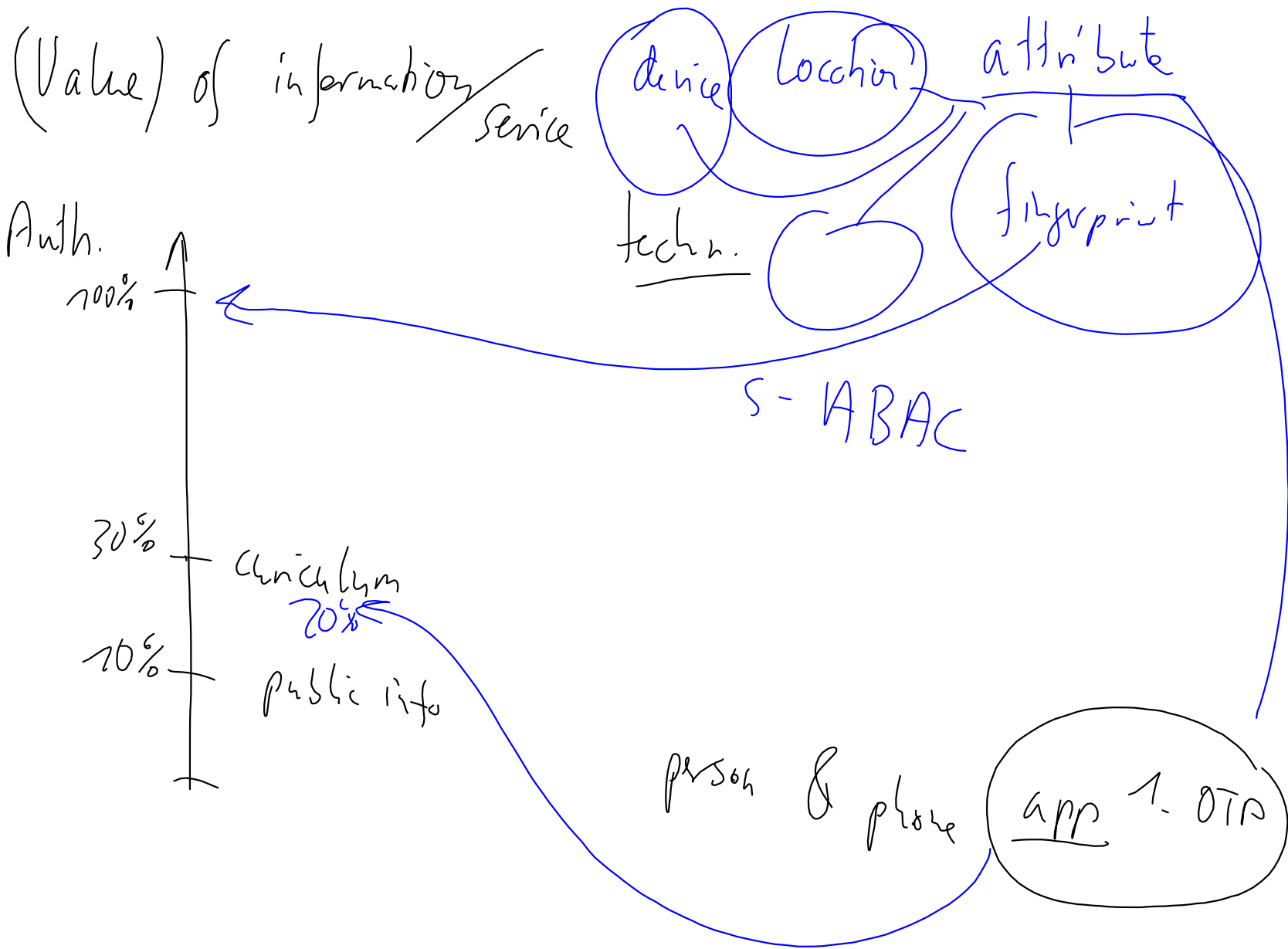
2-25[€] / 80

Remember

- privacy
- data protection
-



access
authentication



gle 2050 population Sign in

All Images Maps Videos News More Settings Tools

About 42,000,000 results (0.55 seconds)

Population and Sustainability - Join Our Campaign

Ad www.populationmatters.org/ We provide education, advocacy and research on population issues. Join us today.

The current world population of **7.3 billion** is expected to reach 8.5 billion by 2030, **9.7 billion** in 2050 and 11.2 billion in 2100, according to a new UN DESA report, "World Population Prospects: The 2015 Revision", launched today. Jul 29, 2015

World population projected to reach 9.7 billion by 2050 | UN DESA ...
www.un.org/en/development/desa/news/population/2015-report.html

About this result • Feedback

World population projected to reach 9.7 billion by 2050 | UN DESA ...

www.un.org/en/development/desa/news/population/2015-report.html Jul 29, 2015 - The current world population of 7.3 billion is expected to reach 8.5 billion by 2030, 9.7 billion in 2050 and 11.2 billion in 2100, according to a new UN DESA report, "World Population Prospects: The 2015 Revision", launched today.

Projections of population growth - Wikipedia

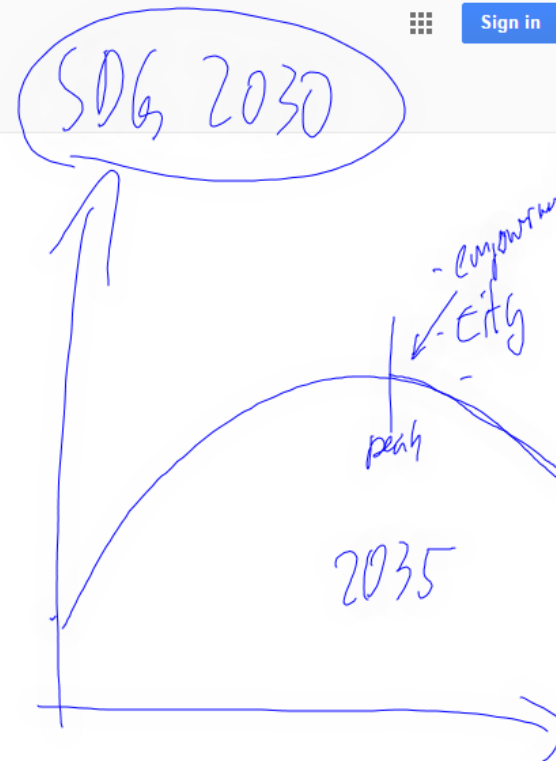
https://en.wikipedia.org/wiki/Projections_of_population_growth Jump to World population in 2050 - The median estimate for future growth sees the world population reaching 9.7 billion in 2050 and 11.2 billion in 2100, assuming a continuing decrease in average fertility rate from 2.5 in 2015 to 2.25 in 2050 and 2.0 in 2100. Growth regions · World population in 2050 · Most populous nations by 2030

Population Pyramid of Nigeria in 2050

https://populationpyramid.net/nigeria/2050/ Population Pyramid of Nigeria in 2050. ... 2015 2020 2025 2030 2035 2040 2045 2050 2055 2060 2065 2070 2075 2080 2085 2090 2095 2100 398.507.000.

Global population set to hit 9.7 billion people by 2050 despite fall in ...

https://www.theguardian.com › World › Development › Environmental sustainability Jul 29, 2015 - The world's population is set to rise to almost 10 billion people by 2050, according to the UN. Photograph: Georges Gobet/AFP/Getty Images.



Plans

- re-establish ~~Plan~~ communication India
- "create a good plan"
- invite ambassador of Norway

(Feb/Mar 2017)

Plan LPI

(USAid)

Inauguration "Alliance"
Peter Indis

inst meeting
Delhi