

BIA

✓ "Measurable Security"

33% NFR

"Impact"

n Shield

16.7% 3U Artemis
Demonstrator

IQ Engine

3U Artemis

Int. Samarbeit

"mathem. proof"

↳ embedded systems

SP

NSHIELD-D8.4_Operational_Manual_v1.docx - Microsoft Word

Home Insert Page Layout References Mailings Review View

Cut Copy Format Painter Clipboard

Arial 12

Font Paragraph Styles

• AaBbCc AaBb AaBbCcI AaBbCcDc 1 Aa 1.1 Aa

Find Replace Select Editing


Document Recovery

Available files

TillbudRobert-medComments...
Version created last time the ...
09:30 10. januar 2012

Which file do I want to save?
Close

Page: 5 of 21 Words: 3/3 705 English (U.K.) 100%



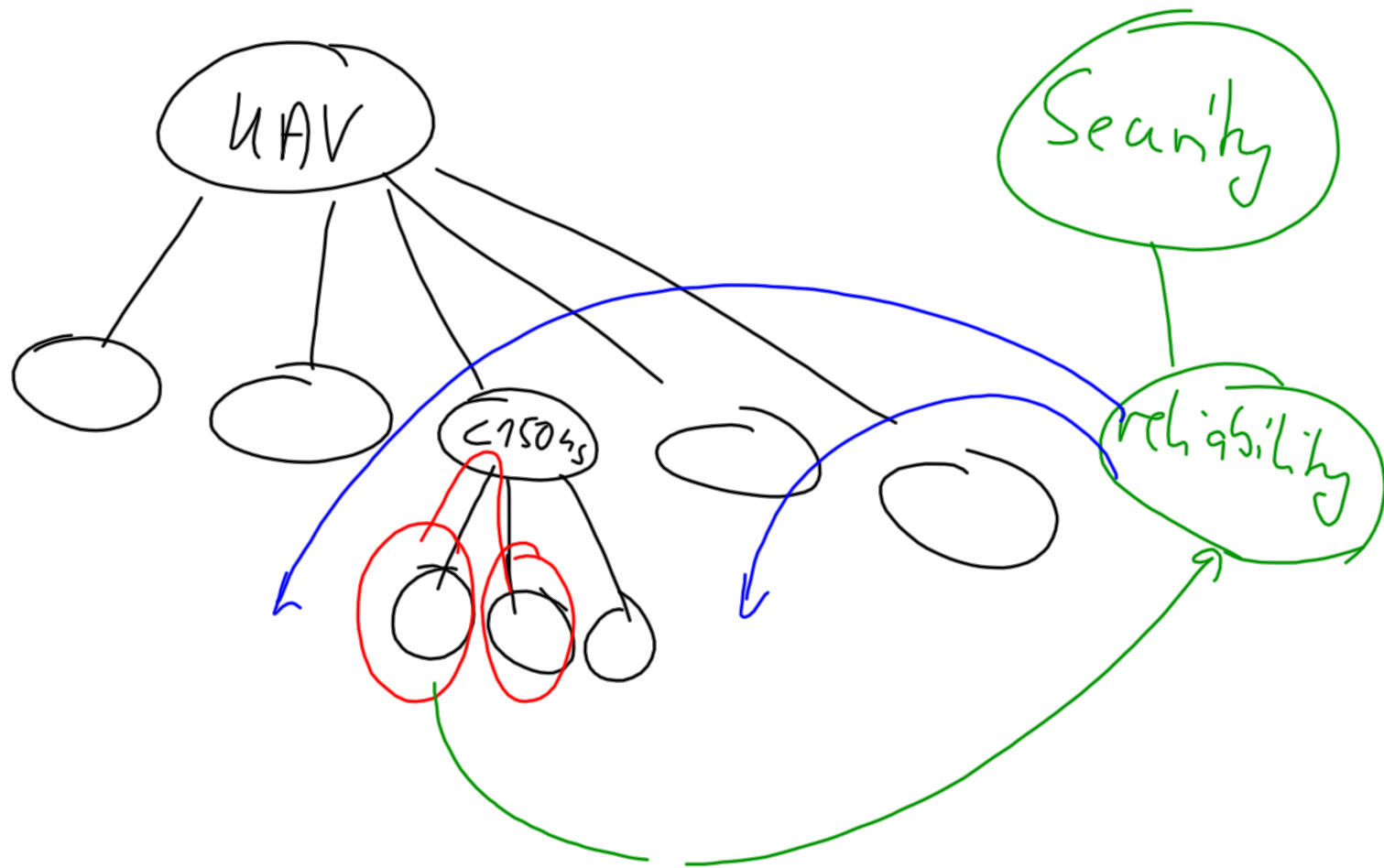
Contents

1	Introduction	9
2	Is security an issue for your company?.....	11
2.1	Introduction to Security features	11
2.2	The nSHIELD run-through	11
2.3	Security for interoperability	12
3	Run-through details.....	13
3.1	Overview.....	13
3.2	The Need for Security	14
3.3	SHIELD ontology.....	14
3.4	Metrics-based assessment	16
3.5	Composable Security	17
3.6	Testing and Verification	18
3.7	Expected Outcome	20
4	Conclusions.....	21

Semantic

Figures

Figure 1-1:	The upcoming business world of dynamic interaction between entities.....	9
Figure 3-1:	SHIELD framework for measurable security	13



full modell:

- 32 differential ligninger

redusert modell:

- 18 differential ligninger

(bruk fysisk forståelse)

- "stiff wings"

Analysis possible to show

how big the error is. "linear models"

Reduction of database:

(z-x) for fine adjustments

other discretisation

Prove that discretisation does not

reduce the quality of operation

Baggrunn

down-scale algorithm on silicon
fragment

kunnskap

embedded

- algorithms

- backend server



!



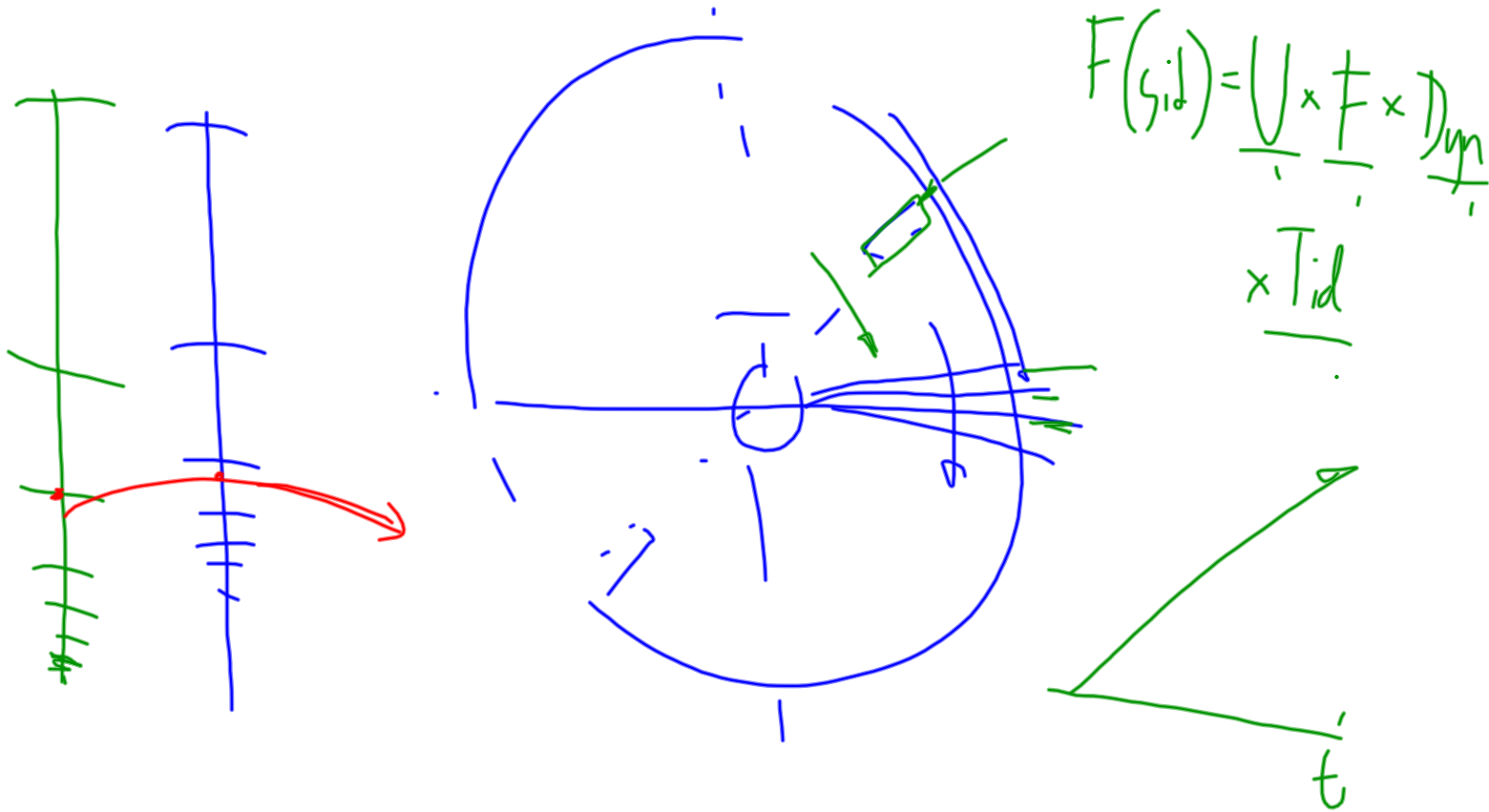
demo

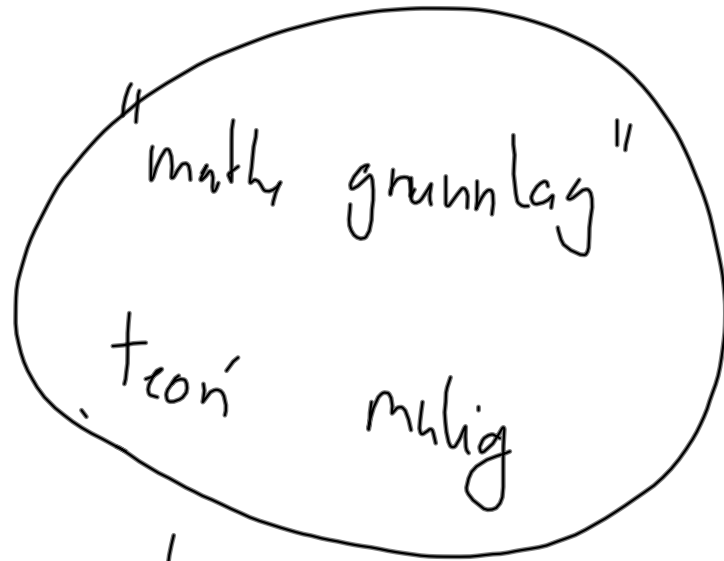
mathem. provable

consistent
uavhengige prosesser
digitalisering A/D



treghetsnavigasjon:
1/s ytre sløyfe



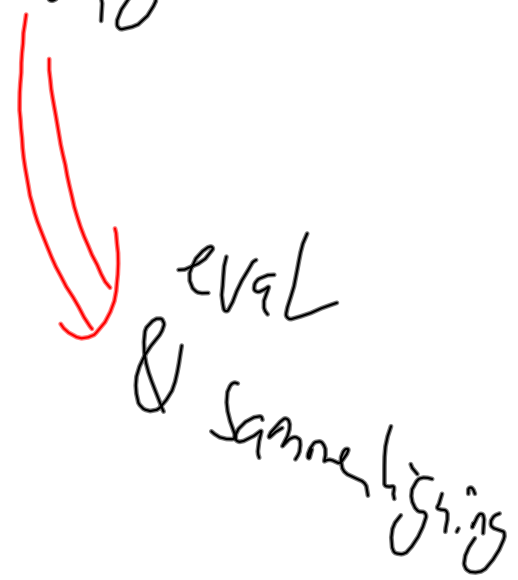


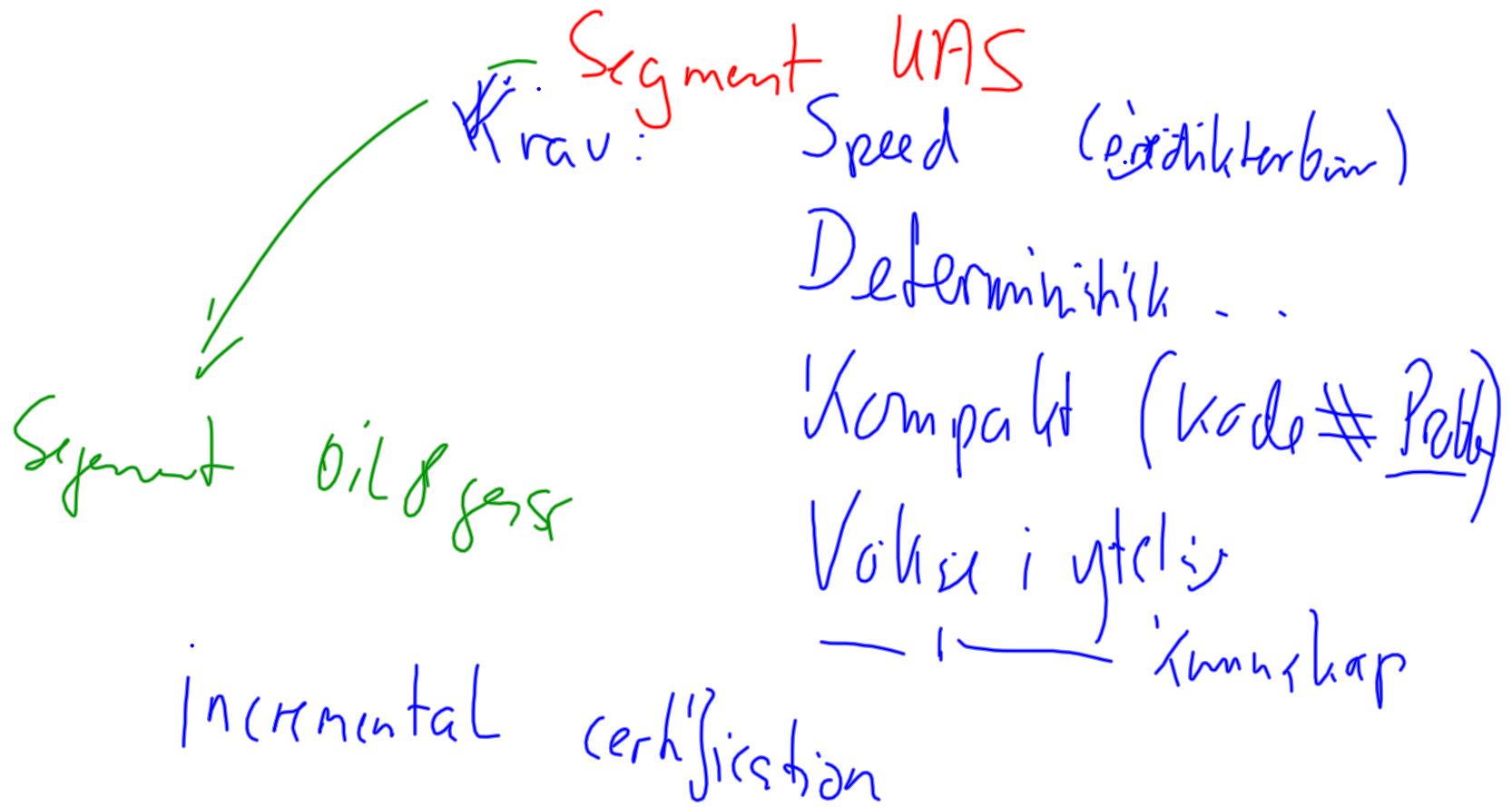
l avgrensninger
hypoteser

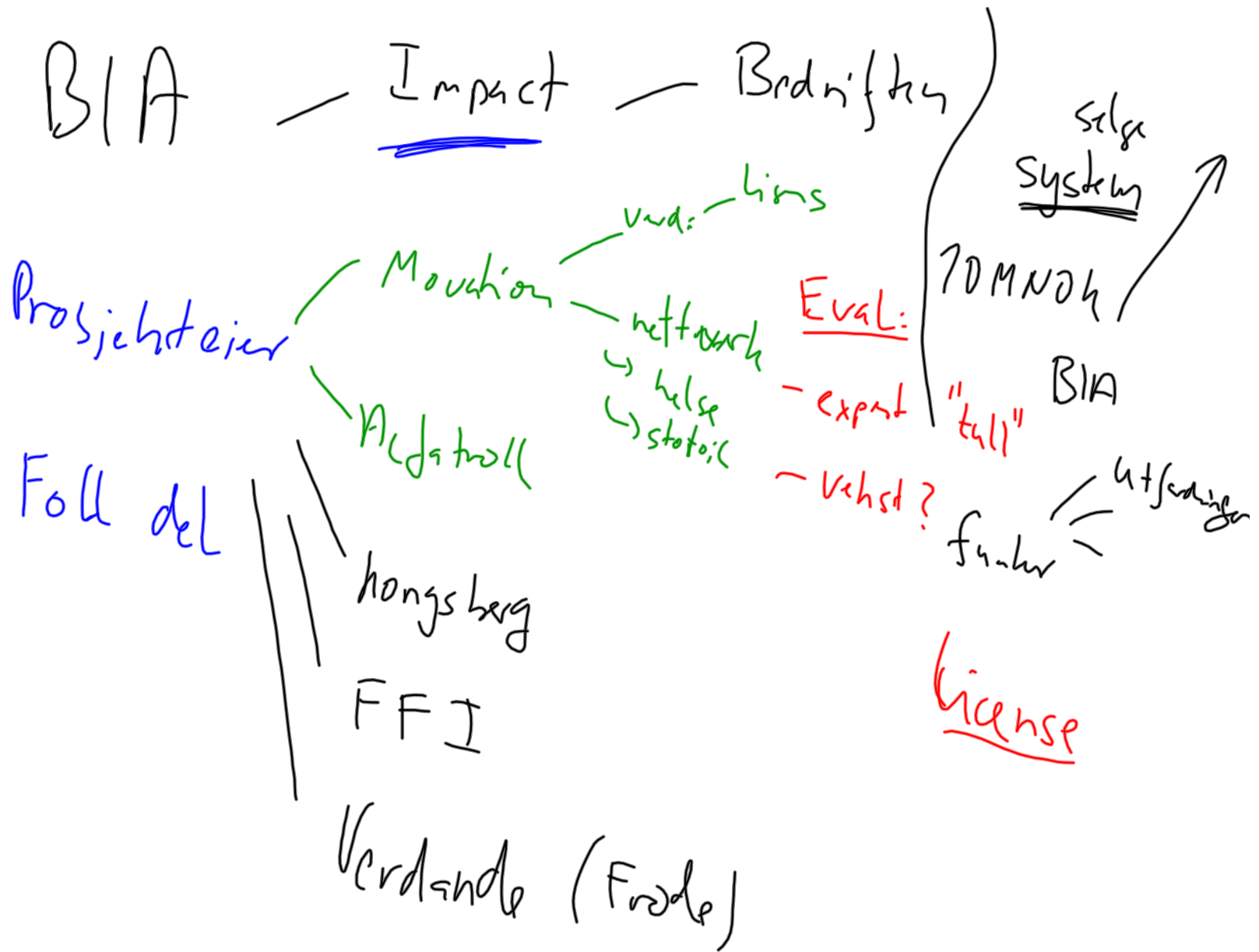


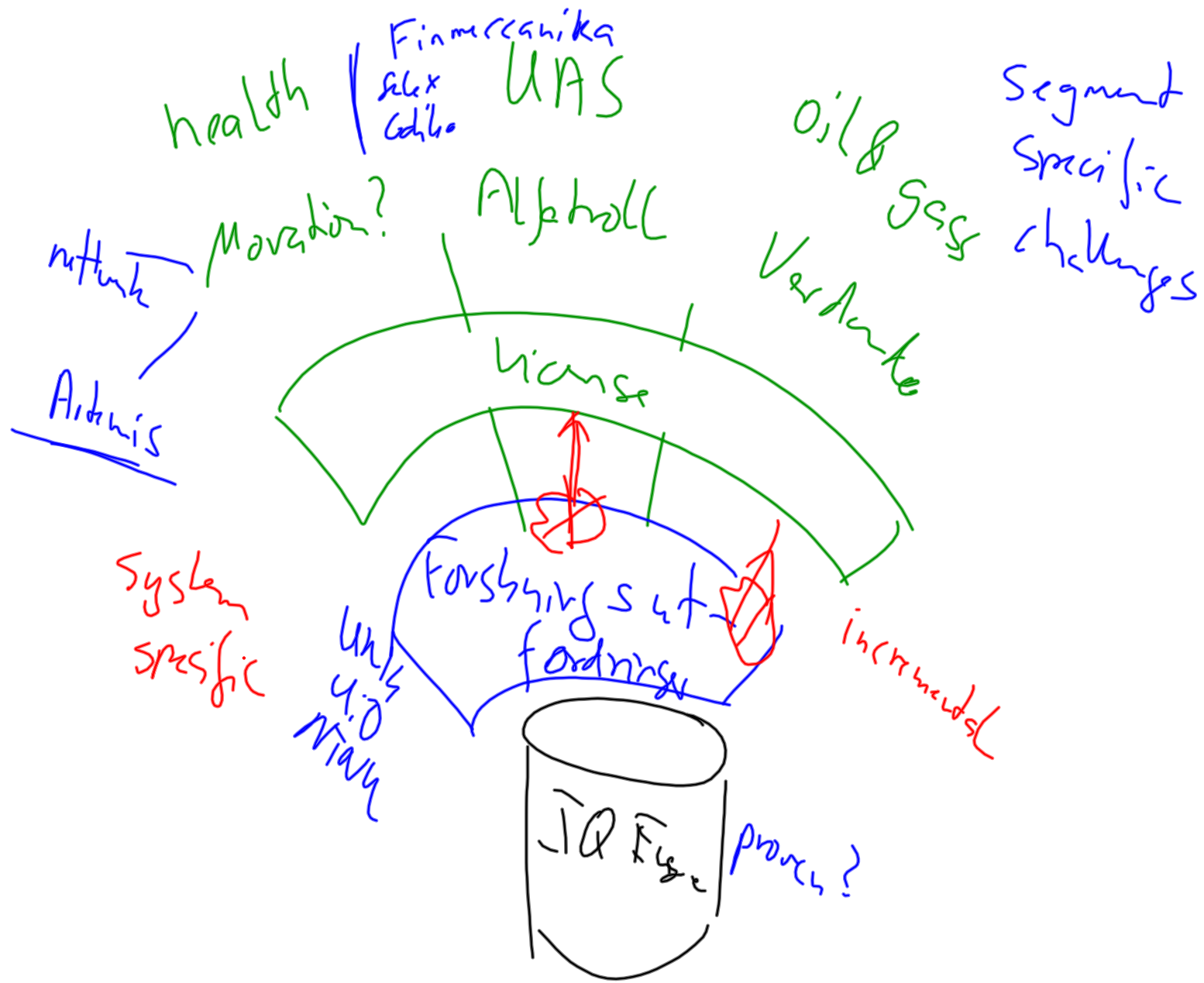
utvikle

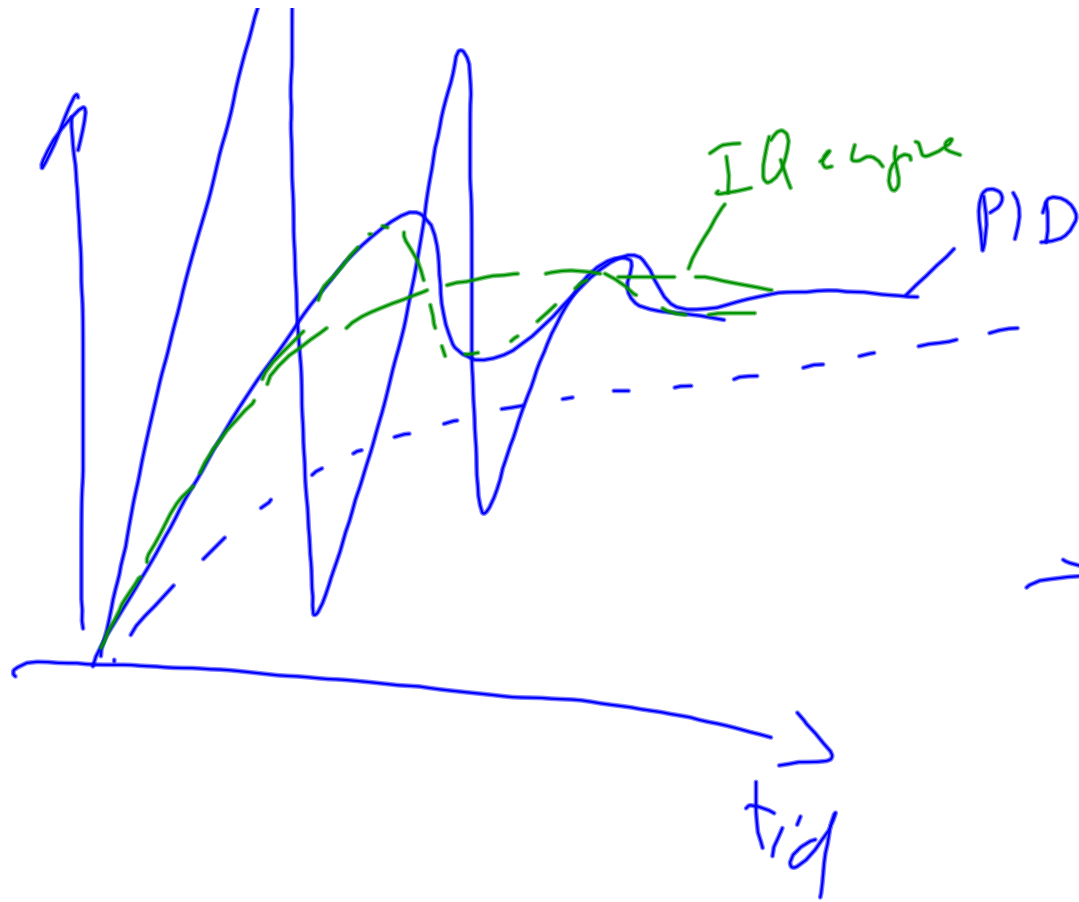
(BIA)











65 mill linje
 \$50 per -1

 3 BUSD

JSE

Q

35% \sum Schritte < 50% BIA impact
Schrittsumme + 20%

Altscholl	3 Mio
- Mo	0,500
- Fol	1,5
industriell	% < 35%
total	< 35%

Partner
industriell
academic
< 35%
X