



RFID/NFC TECHNOLOGY

With emphasis on physical layer

Ali Zaher

Oslo 28.09.2012

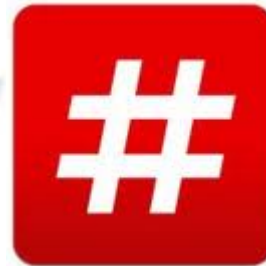
CONTENTS

- List of abbreviations.
- RFID/NFC around us.
- RFID Definition.
- RFID Coupling.
- NFC.
- RFID Physical Model.
- NFC Physical Model.
- My work.

LIST OF ABBREVIATIONS

- RFID: Radio Frequency Identification.
- NFC: Near Field Communication.
- UWB: Ultra Wide Band.
- ASK: Amplitude Shift Keying.
- FSK: Frequency Shift Keying.
- ECMA: European Computer Manufacturers Association.
- FCC: Federal Communications Commission.
- CEPT: European Conference of Postal and Telecommunications Administrations. (French).
- ERP: Equivalent Radiated Power.
- EIRP: Equivalent Isotropically Radiated Power.

RFID/NFC AROUND US.

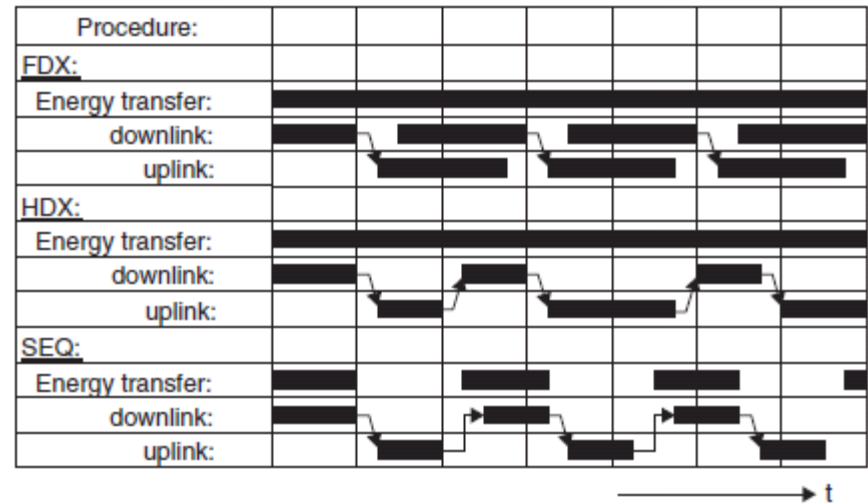


RFID DEFINITION

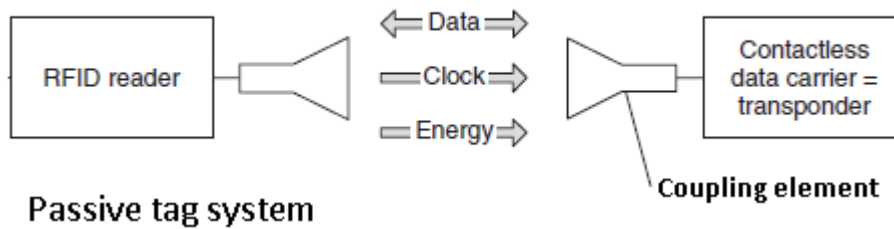
- Wireless non-contact system.
- Used for automatic identification.
- Made of two separate parts
 - A reader or interrogator.
 - A transponder or tag containing data.
- Works from <1cm range to >10m.
- Frequency: from ~135 Khz to 5.8 Ghz range.
- Two types of tags:
 - Passive: has no energy source except the reader.
 - Active: has a battery or another form of energy source (Energy harvesting).

RFID DEFINITION

- Communication:
 - Full duplex/ Half duplex.
 - Sequential Procedures.
- Data space on the tag: few bytes to several kilobytes.



10/2/2012

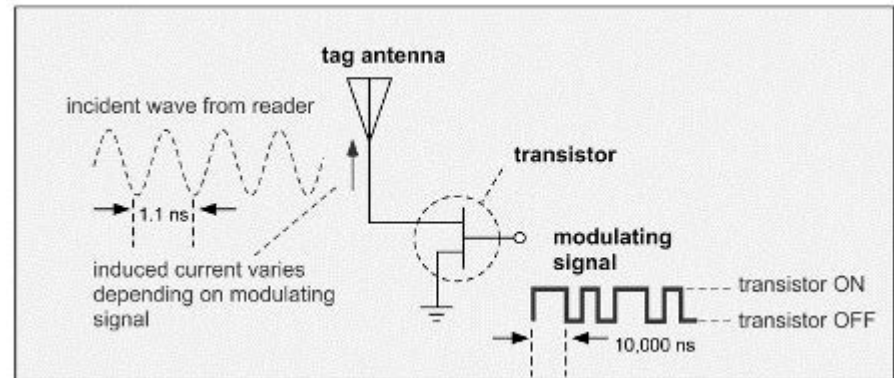
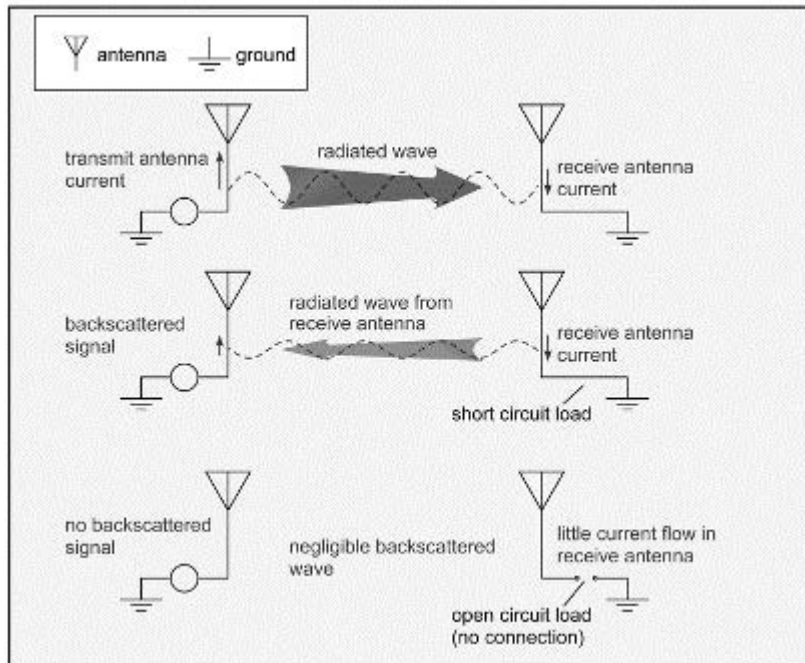


- i. Klaus Finkenzeller, RFID Handbook Fundamentals and applications in Contactless Smart cards, radio frequency identification and near field communication, Third edition 2010
- ii. Bekir Bilginer, Paul-Luis Ljunggren, Near Field Communication, Master's Thesis, Lund University, February 2011.

RFID COUPLING

○ Backscattering:

- the signal leaves the reader.
- hits the tag, parts of the signal is reflected back.
- The reflected signal properties can be changed by adding a load across the tag antenna (modulating).

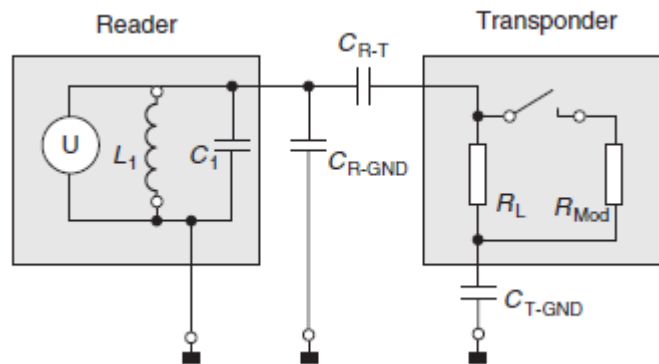


RFID Basics: Backscatter Radio Links and Link Budgets.
EETimes. 10/02/2007

RFID COUPLING

○ Capacitive:

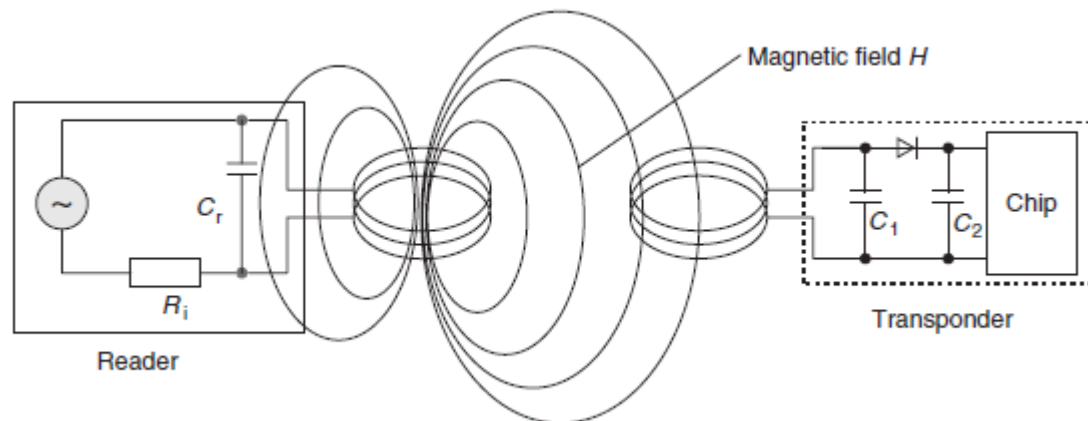
- The tag is in very close proximity (inside the reader).
- Plate capacitors constructed from coupling surface isolated from one another.
- Data transmission is done via load modulation.



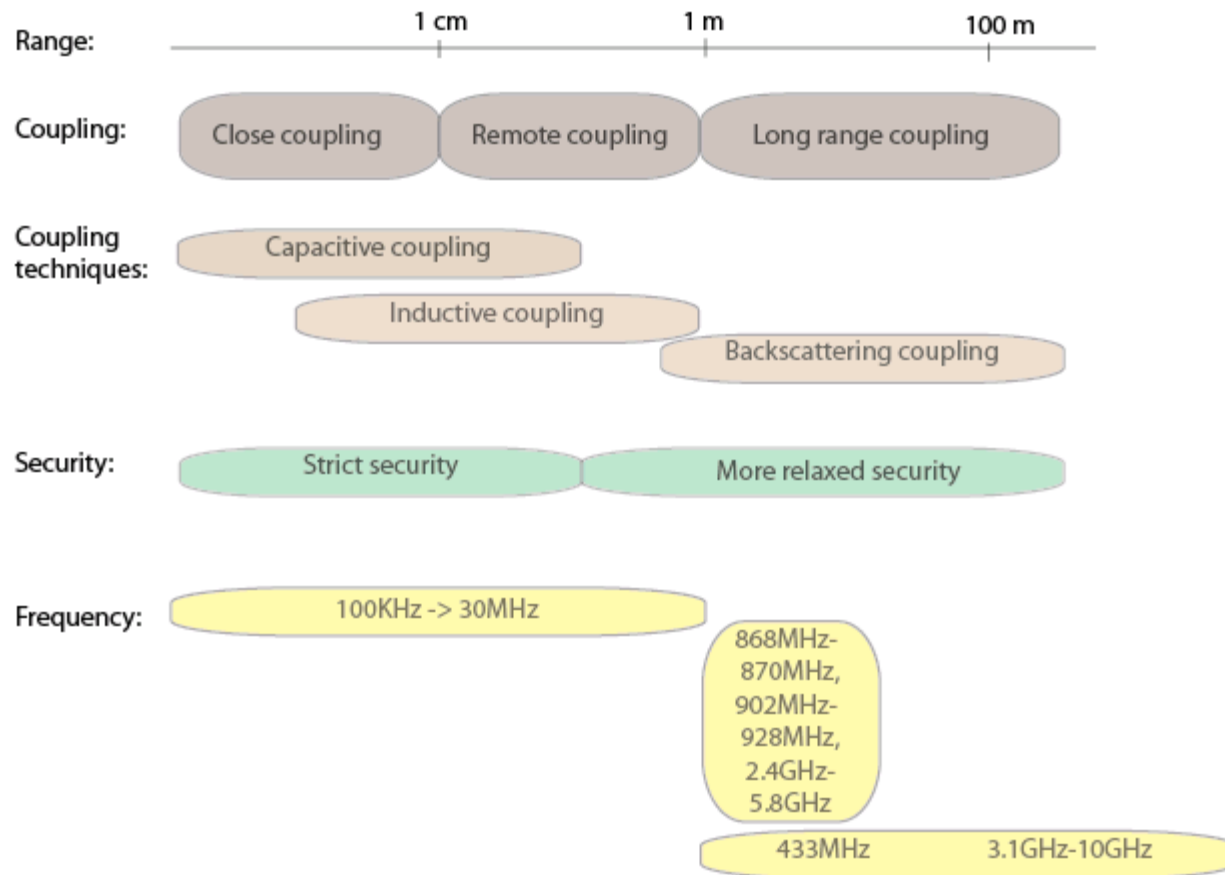
RFID COUPLING

○ Inductive:

- The tag is in close proximity (less than $\lambda/2\pi$).
- Mutual inductance between two coils.
- Data transmission is done via load modulation.



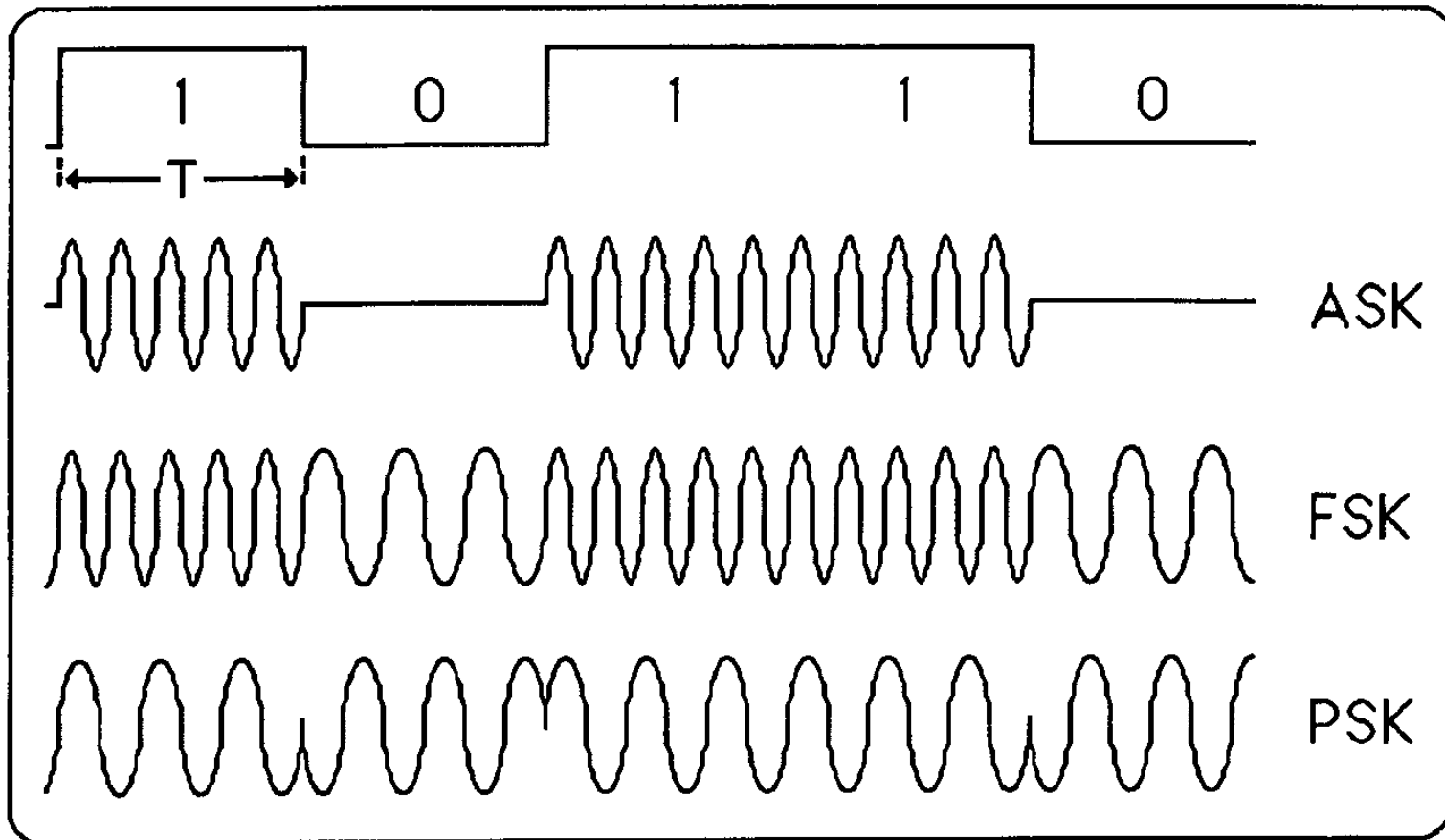
RFID CLASSIFICATION



NFC

- RFID with the following properties:
 - Frequency: $13.56\text{MHz} \pm 7\text{KHz}$.
 - Range: < 20 cms.
 - Inductive coupling.
 - Data rate: 106 kbps to 424kbps.
 - Tags can be active/passive.
 - Digital Modulation: ASK, PSK or FSK.
 - Standards: RFID standard ISO 14443, ISO 18092 and ECMA-340.

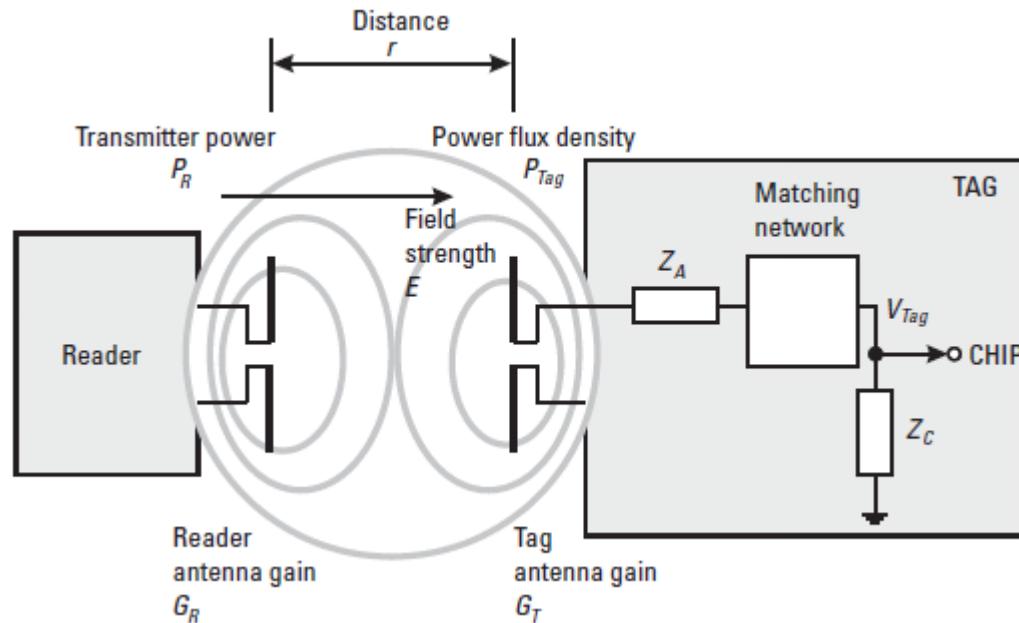
MODULATION: ASK, FSK, PSK



RFID PHYSICAL MODEL

1. Forward Power Transfer:
 - Sufficient power must be transmitted to energize the circuit inside the transponder.
2. The Radar Equation:
 - The reader must be able to detect and resolve the scattered signal returned.

RFID: FORWARD POWER TRANSFER



$$E^2 / 120\pi = P_R G_R / 4\pi r^2$$

$$P_{Tag} = (E^2 / 120\pi) (\lambda^2 / 4\pi) G_T = V_{tag}^2 / R_c$$

$$P_{Tag} = (P_R G_R / 4\pi r^2) (\lambda^2 G_T / 4\pi) = P_R G_R G_T \lambda^2 / (4\pi)^2 r^2$$

$$V_{Tag} = (\lambda / 4\pi r) \sqrt{P_R G_R G_T R_c}$$

Power transmitted is regulated by FCC (in EIRP) and CEPT (in ERP).

- i. Refer to the Antenna presentation (pages 10-12) by Håvard Austad
- ii. Harvey Lehpamer, RFID design principles, Chap 5. Artech House Publishers, December 2007

RFID: FORWARD POWER TRANSFER EXAMPLE

Freq = 915 MHz.

V = 1.6 V_{rms}.

Gains = 2dBi (~1.6)

Distance = 1m.

$$P_{Tag} = V_{Tag}^2 / R_c = 1.6^2 / 600 = 0.0043 \text{ [W]}$$

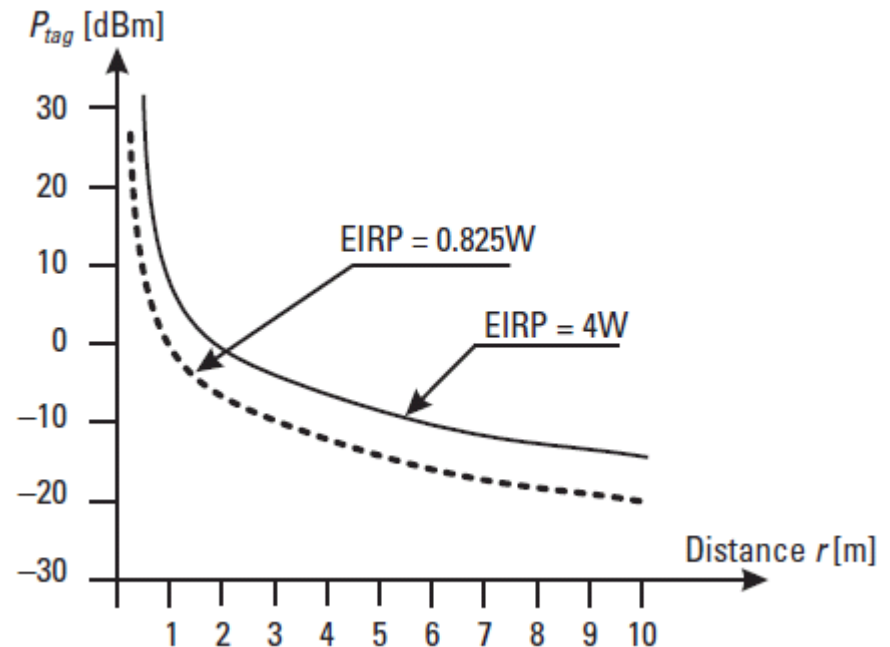
$$P_R = (4\pi r V_{Tag} / \lambda)^2 (1 / (G_R G_T G_c))$$

$$P_R = (4\pi \cdot 1 \cdot 1.6 / 0.33)^2 (1 / (1.6 \cdot 1.6 \cdot 600))$$

$$P_R = 2.416 \text{ [W]}$$

$$G[\text{dBi}] = 10 \log G \rightarrow G = 10^{\frac{G[\text{dBi}]}{10}}$$

$$\text{EIRP} = P_R \cdot G_R \sim 4\text{W}$$



ERP	EIRP	dBm	Gain	Power amplifier in dB
500mW	825mW	29dBm	2dBi	27dBm
2W	3.3W	35dBm	2dBi	33dBm
2.4W	4W	36dBm	2dBi	34dBm

RFID: RADAR EQUATION

- The larger the reflective area, the greater the reflective energy (Radar cross section, RCS).
- In RFID, Differential RCS or ΔRCS (Due to modulation).
- Effective aperture: $A_e = \lambda^2 G_T / 4\pi \text{ [m}^2\text{]}$
- Differential reflection coefficient: $\Delta\rho$ around 0.5 but less than 1.
- $\sigma = \Delta_{\text{RCS}} = A_e \cdot G_T \cdot (\Delta\rho)^2 = \frac{\lambda^2 G_T^2 (\Delta\rho)^2}{4\pi} \text{ [m}^2\text{]}$
- Power Flux density: $S = \frac{P_R}{4\pi r^2} \text{ [W/m}^2\text{]}$,
- Directional power flux density: $S_D = S \cdot G_R$
- Power returned to the reader: $P_{\text{Ret}} = \frac{P_R}{4\pi r^2} \cdot G_R \cdot \sigma \text{ [W]}$
- Power density at the reader: $S_{\text{REC}} = \frac{P_{\text{Ret}}}{4\pi r^2} = \frac{P_R \cdot G_R}{(4\pi)^2 r^4} \cdot \sigma$

f [MHz]	λ [m]	r [m]	P_{Reader} [W]	P_{Reader} [dBm]	Reader Antenna Gain	Tag Antenna Gain	$\Delta\rho$	σ [m ²]	P_{Received} [μ W]	P_{Received} [dBm]	Power Ratio [dB]
915.00	0.33	1.00	2.00	33.01	1.60	1.60	0.50	0.0055	1.5185	-28.19	-61.20

NFC: INDUCTIVE COUPLING

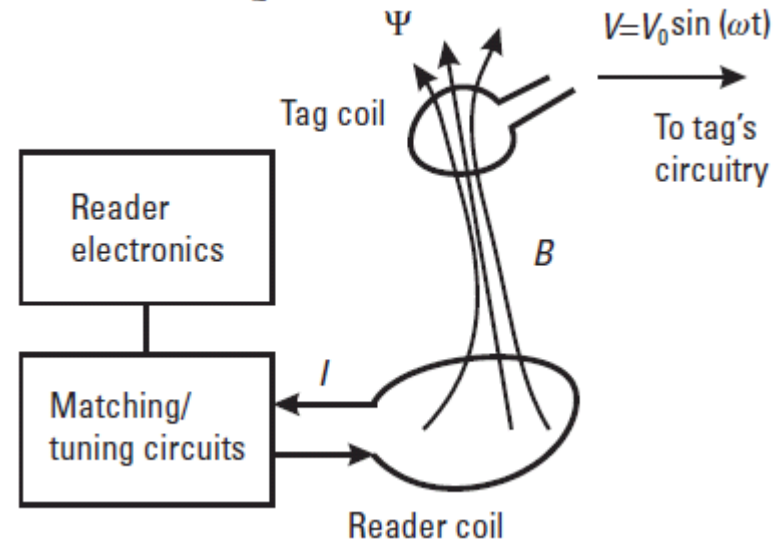
- Magnetic flux density: $B = \frac{\mu_0 INa^2}{2r^3}$ [Weber/m² or tesla]
 - I : Current through the coil.
 - N: Number of windings in reader coil.
 - a: radius of the coil.
 - μ_0 : permeability of free space ($4\pi \times 10^{-7}$ H/m).
 - r: perpendicular distance from coil center. $r \gg a$.

- Resonance Frequency of the reader:

$$f_0 = 1/2\pi\sqrt{LC}$$

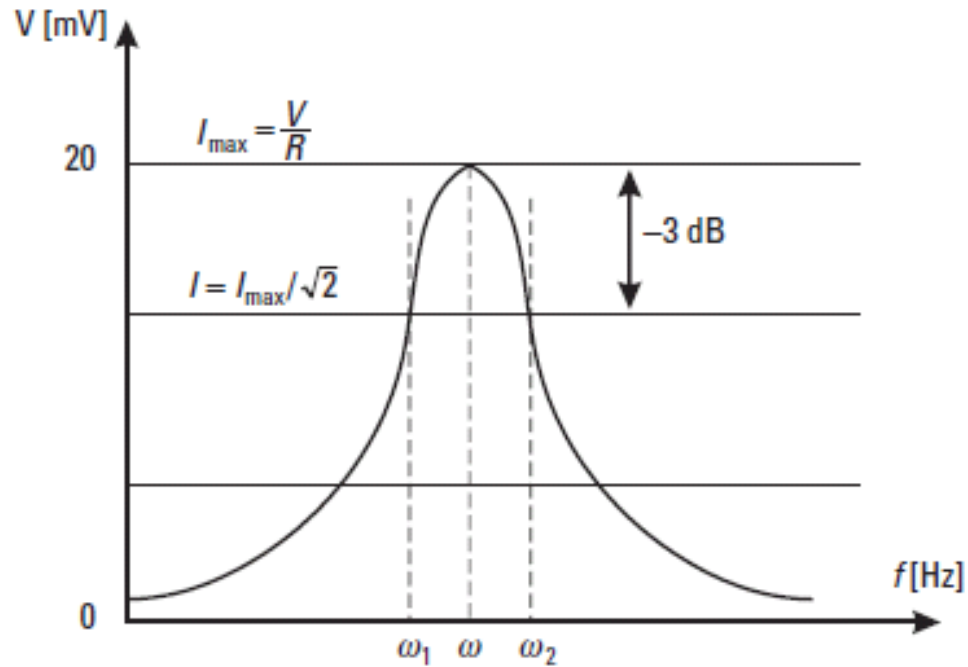
- L: the magnetic flux divided by current. It is affected by: radius of the coil, number of windings, thickness of windings, length of the coil.

- Voltage induced in the tag: $V = -N \frac{d\Psi}{dt}$
 - S: Surface area of the tag coil.
 - Q: Quality factor of resonant circuit.
 - N: Number of windings in tag coil.



10/2/2012

NFC: INDUCTIVE COUPLING



$$Q = \frac{\omega L}{R_s} = \frac{1}{\omega CR} = \frac{\omega}{\omega_2 - \omega_1}$$

Q is within the range of 20 to 80.

REFERENCES

1. Harvey Lehpamer, RFID design principles, Chap 5. Artech House Publishers, December 2007
2. Refer to the Antenna presentation (pages 10-12) by Håvard Austad
3. <http://www.sit.fi/~grahn/fortmod/MT-6.html>
4. Klaus Finkenzeller, RFID Handbook Fundamentals and applications in Contactless Smart cards, radio frequency identification and near field communication, Third edition 2010
5. RFID Basics: Backscatter Radio Links and Link Budgets. EETimes. 10/02/2007
6. Bekir Bilginer, Paul-Luis Ljunggren, Near Field Communication, Master's Thesis, Lund University, February 2011.

MY WORK

- Nano electronics group at IFI, UiO.
- How smart can and should a Smart Sensor Node be?
- Application: Implanted under the skin glucose sensor (GlucoSence).
- Way forward:
 - A non-volatile memory on the sensor. (Flash)
 - A communication link. (NFC)
 - A communication protocol. (???)
- Interested? Contact me!