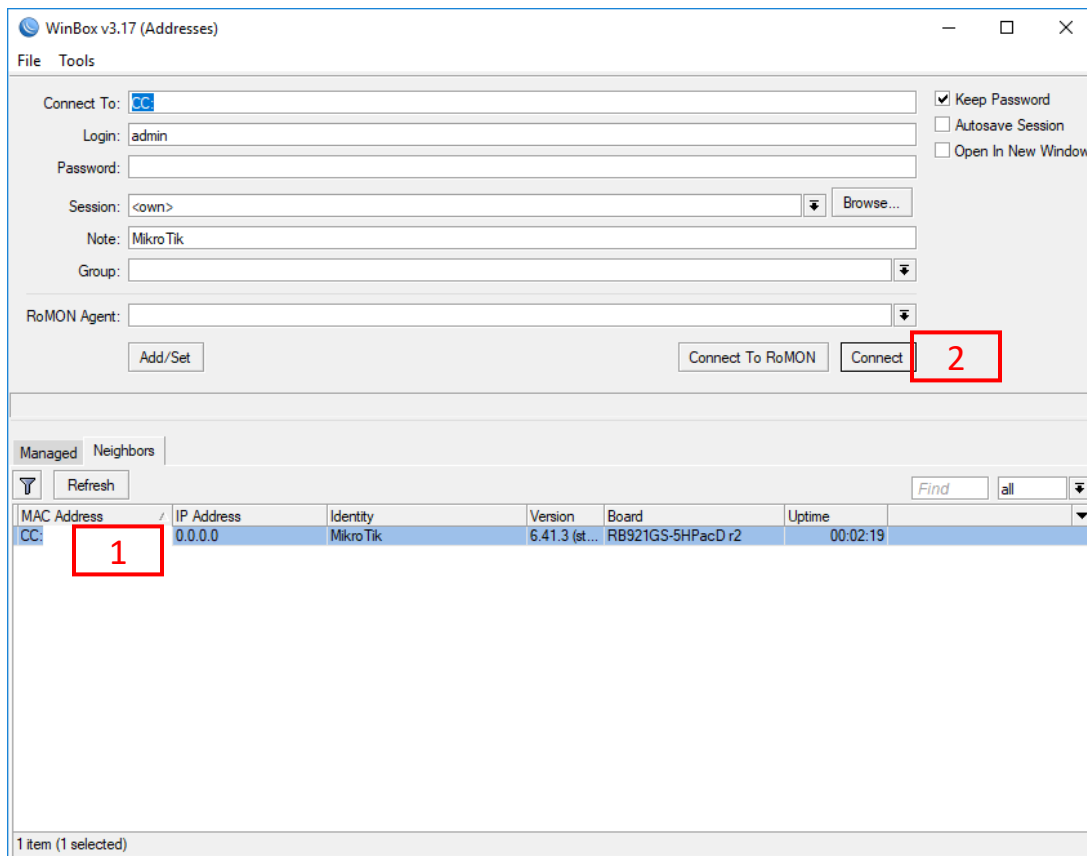


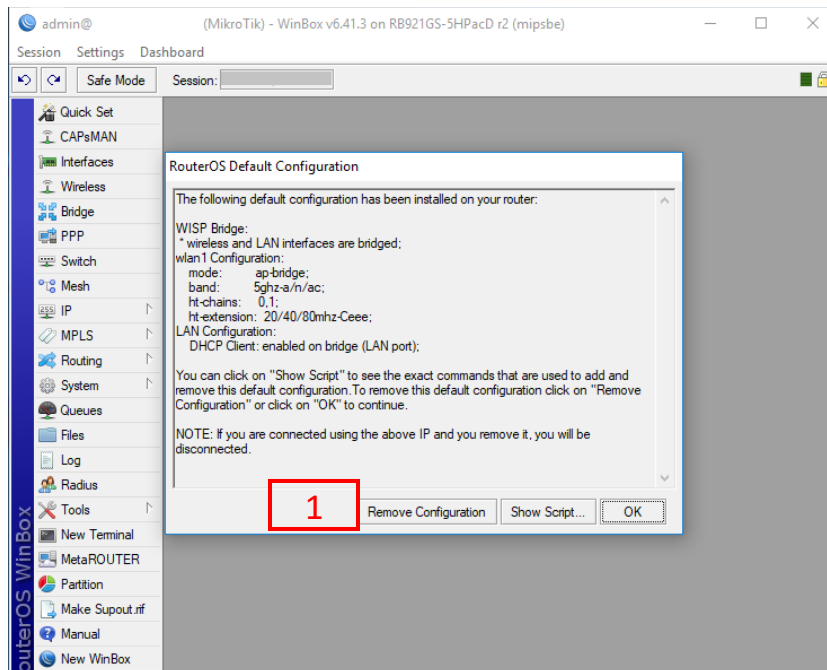
# Wireless Hotspot Configuration

This document provides step by step guide to configure a wireless hotspot with RBD52G.

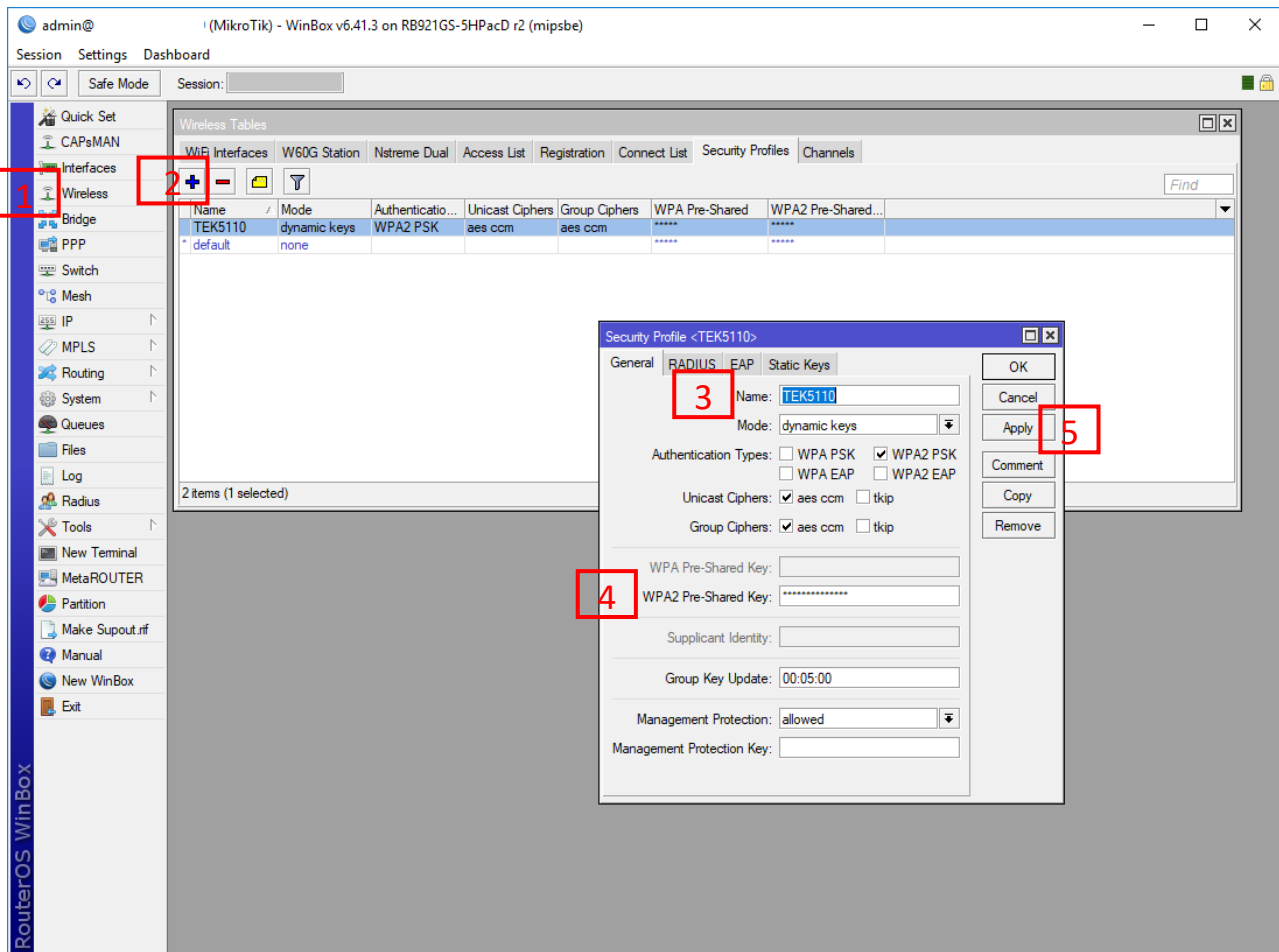
1. Connect to RBD52G with Winbox (use MAC address of RBD52G in Winbox). Use following default “admin” username and empty password to connect.



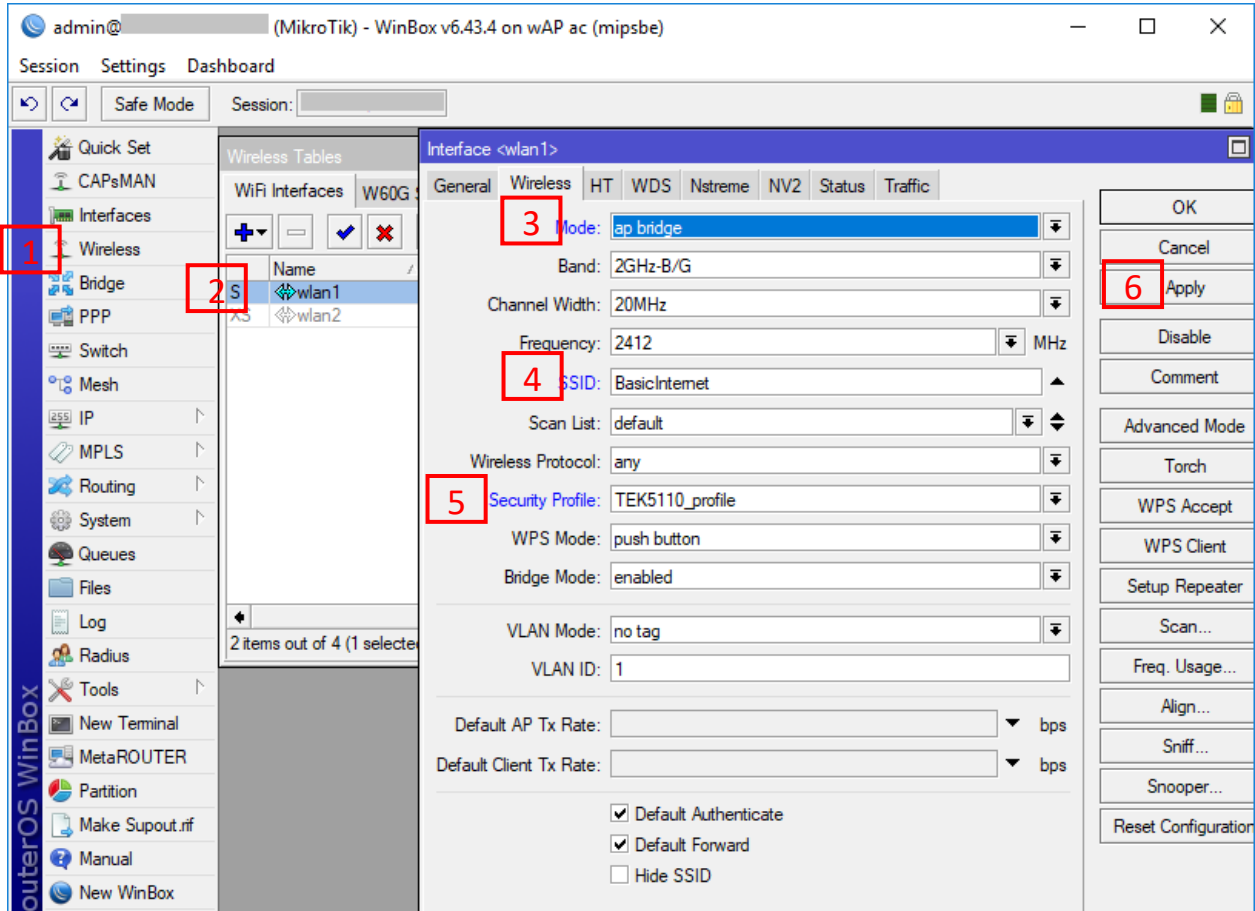
2. Please remove default configuration after login to continue with clean slate.



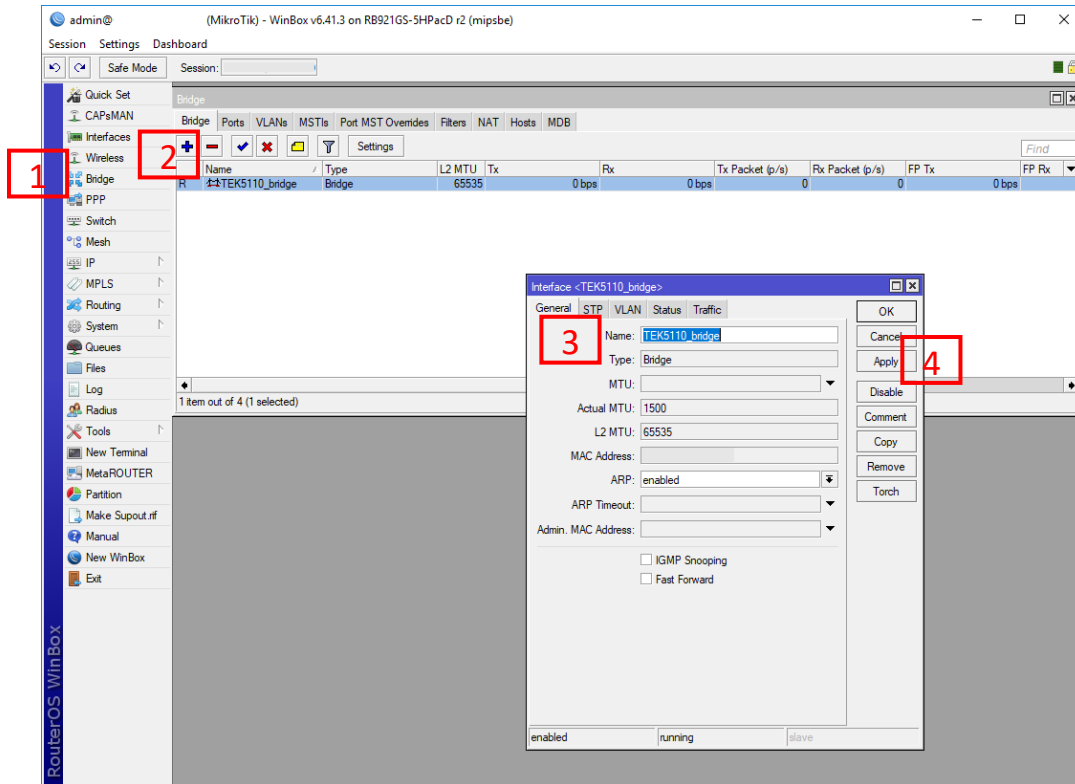
3. Open Wireless tab in order to configure access point so that other devices can connect to RBD52G. First, we need to create a new security profile to authenticate wireless clients.



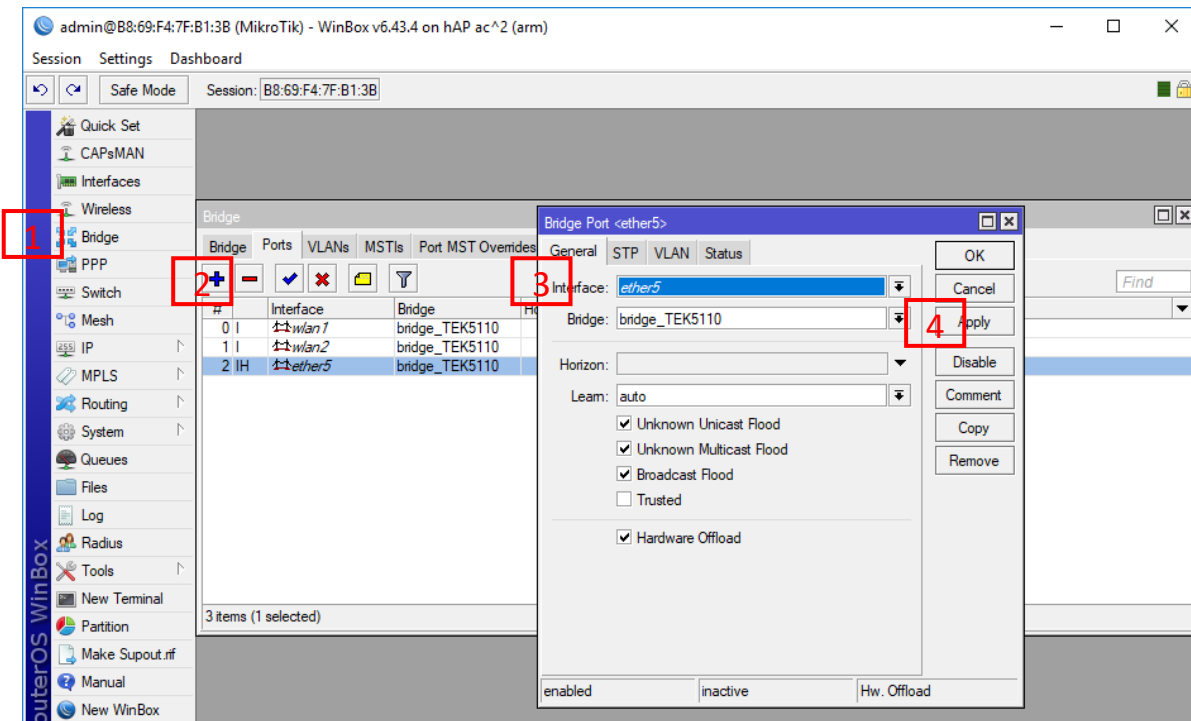
- Then, enable “wlan1” and “wlan2” interfaces and configure wireless interfaces to be access point bridge. In the Wireless tab, select an SSID e.g. “TEK5110” and select security profile “TEK5110” that you have created in previous step.



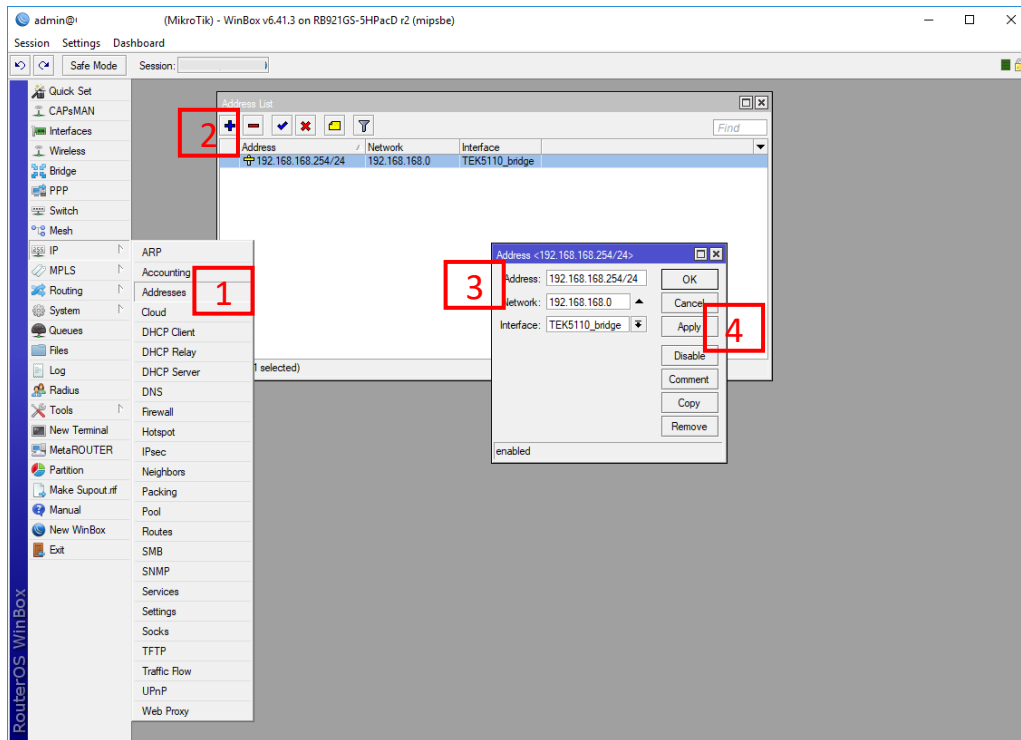
5. Now, create a bridge interface “TEK5110” in order to connect wireless and Ethernet interfaces together.



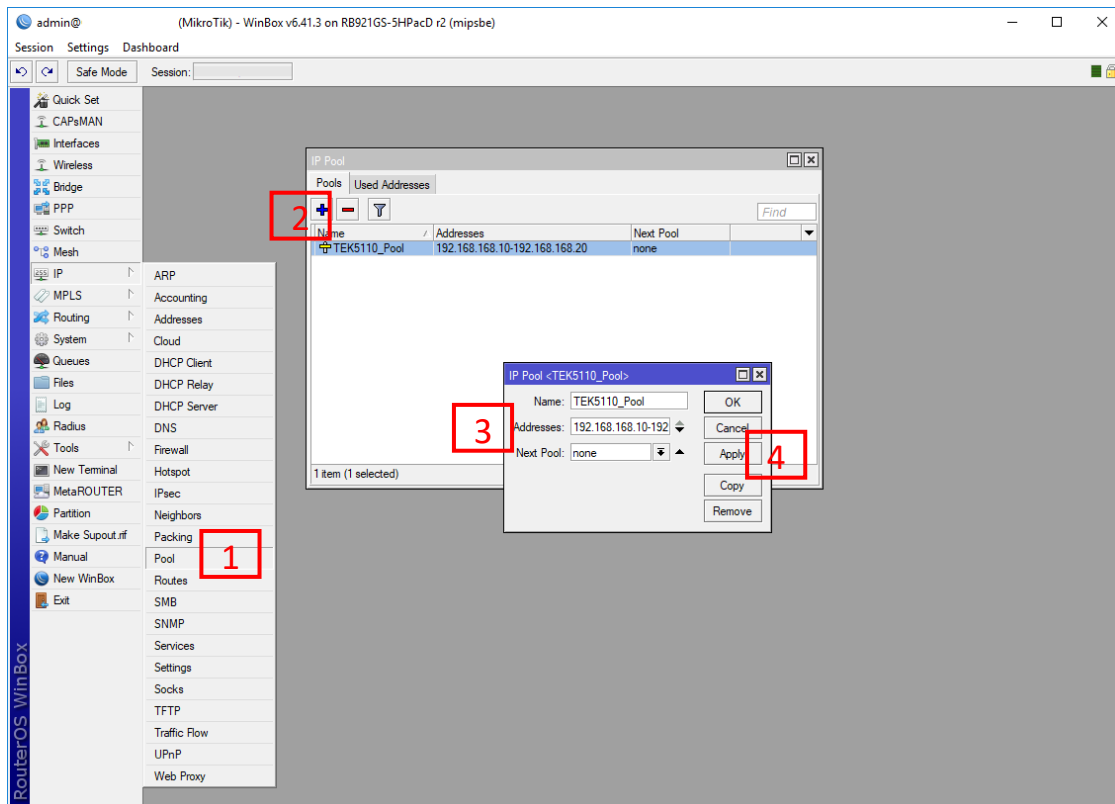
6. Then, add “wlan1”, “wlan2” and “ether5” to the bridge interface that you have created in previous step.



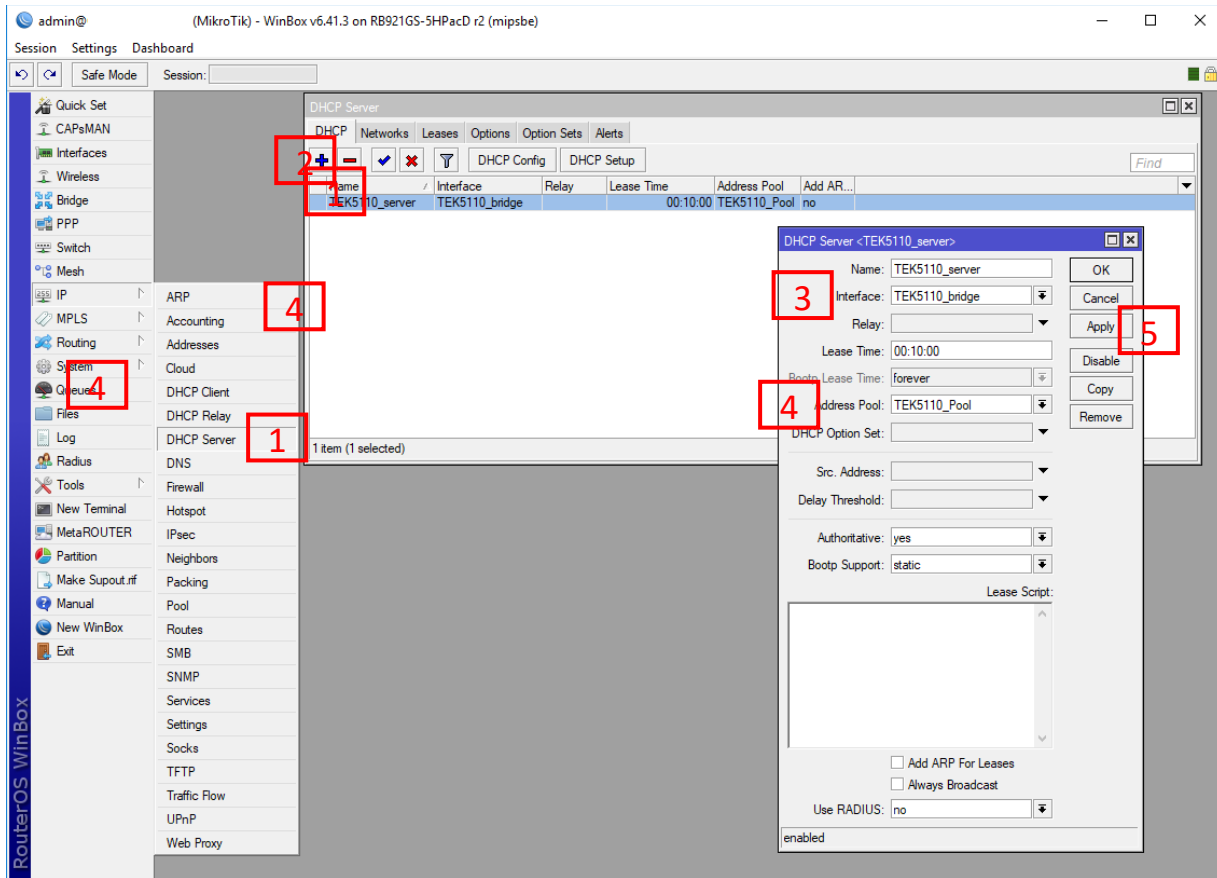
7. Now, we need a DHCP server to lease IP addresses automatically. First, we should assign an IP address “192.168.168.254/24” to the bridge interface we have created.



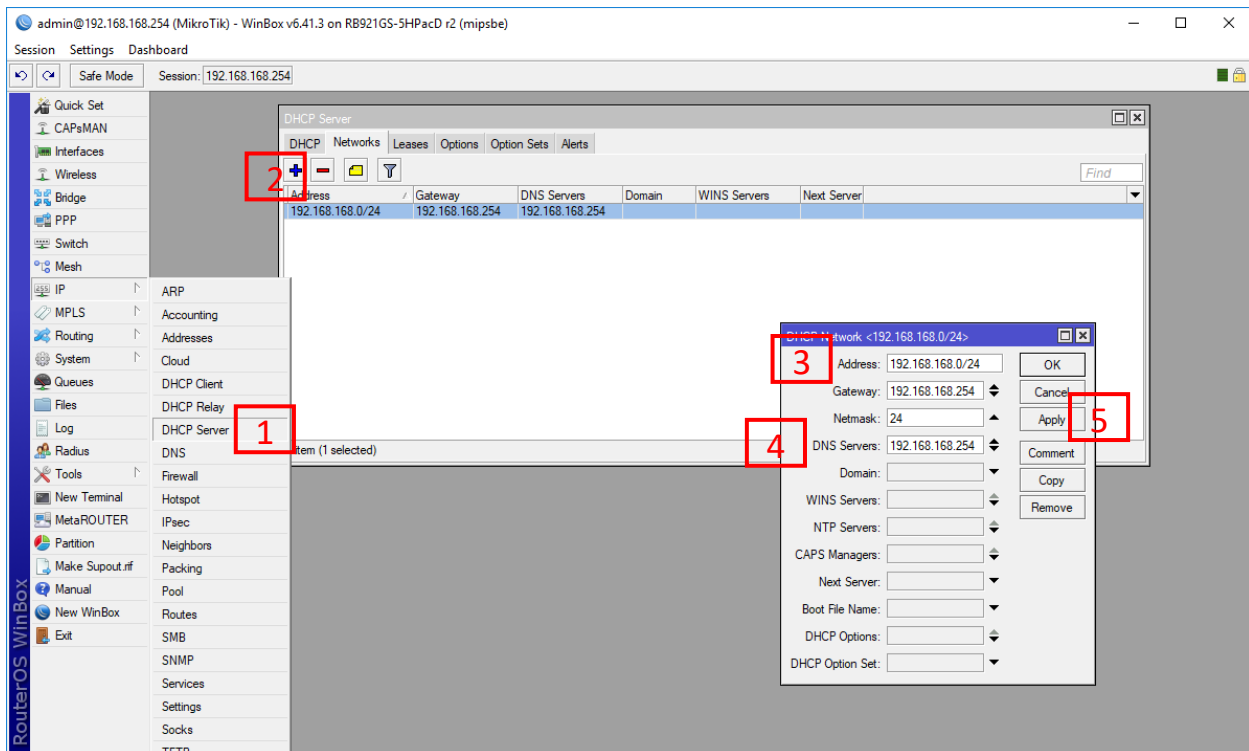
8. In order to create a DHCP server, we need to define IP address pool “192.168.168.10-192.168.168.100”, which we want to assign to devices.



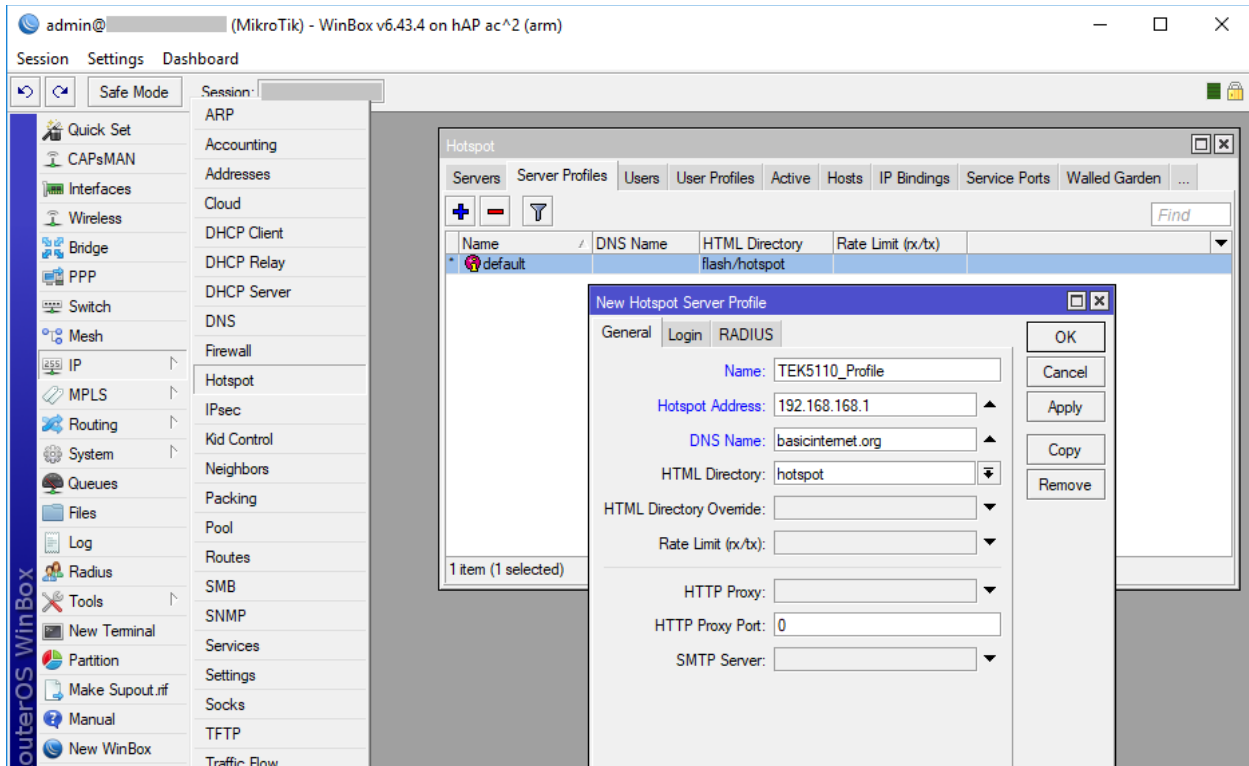
9. Now, we can create DHCP server.



10. Finally, we need to define DHCP server's options (network, gateway and DNS servers) and finish configuration of RBD52G as a hotspot wireless.



11. The we create our hotspot, but first, we need to create a hotspot profile.



12. Finally, we can create our hotspot on the bridge interface.

