

NextelcoBusiness_comments.pptx - Microsoft PowerPoint

File Home Insert Design Transitions Animations Slide Show Review View

Clipboard Slides Slides Outline

1 Business development Product development

Business development *Method / Outcome Aspects (Task)* **Product development**

Output Customer

Opportunity

req. doc

eval

SWOT

Business doc

Opportunity

Sources

roles

Partners

+ processes

+ tools, documentation

Need

- Observation
- Investigation

Market

- implicate users
- Identify similar cases

Business Plan

- Value Chain
- Business Case

Financing

- Business Model
- Legal/ partnership

Business Execution

- Procurement
- Business Rollout

Product to Market

Problem Definition

Qualify Solutions & Technologies

Product Design

Prototype

Final product

Click to add notes

Slide 1 of 1 "Office Theme" Norwegian (Bokmål) 82%

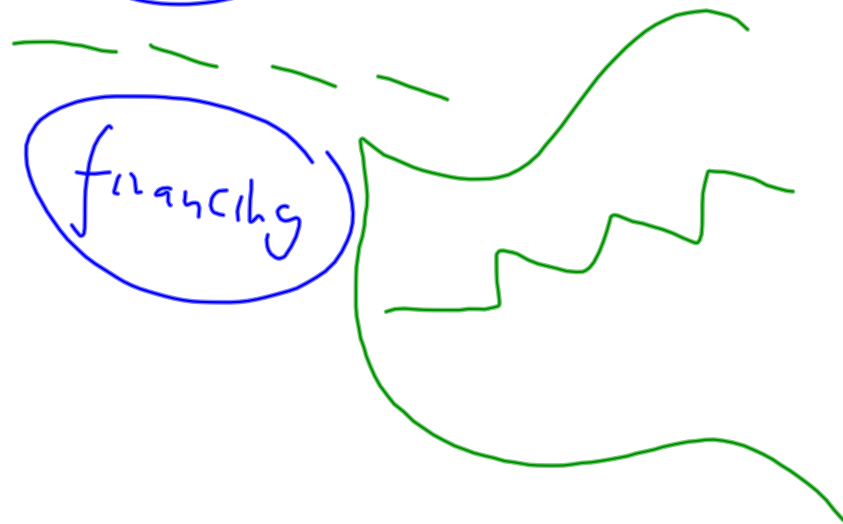
customer

market

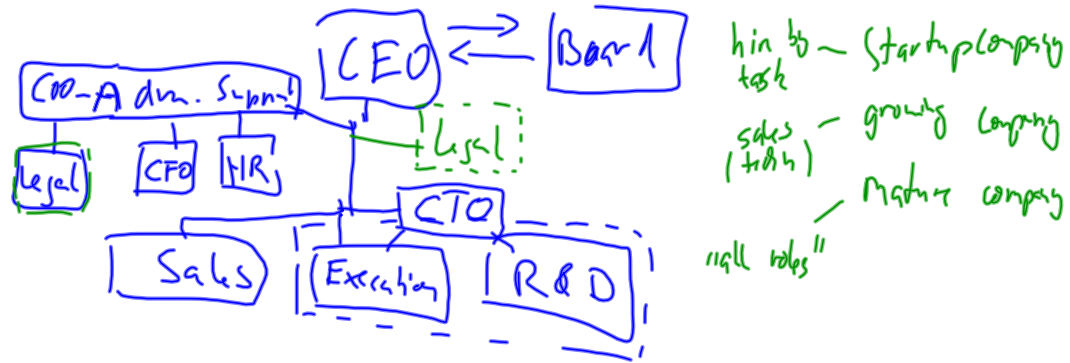
business plan

financing

idea product



idea
prototype
first customer
scale up



NextelcoTasks.pptx - Microsoft PowerPoint

File Home Insert Design Transitions Animations Slide Show Review View Table Tools Ink Tools

Clipboard Paste New Slide Section Slides

Calibri (Body) 11 Font Paragraph Drawing Editing

Slides Outline

1

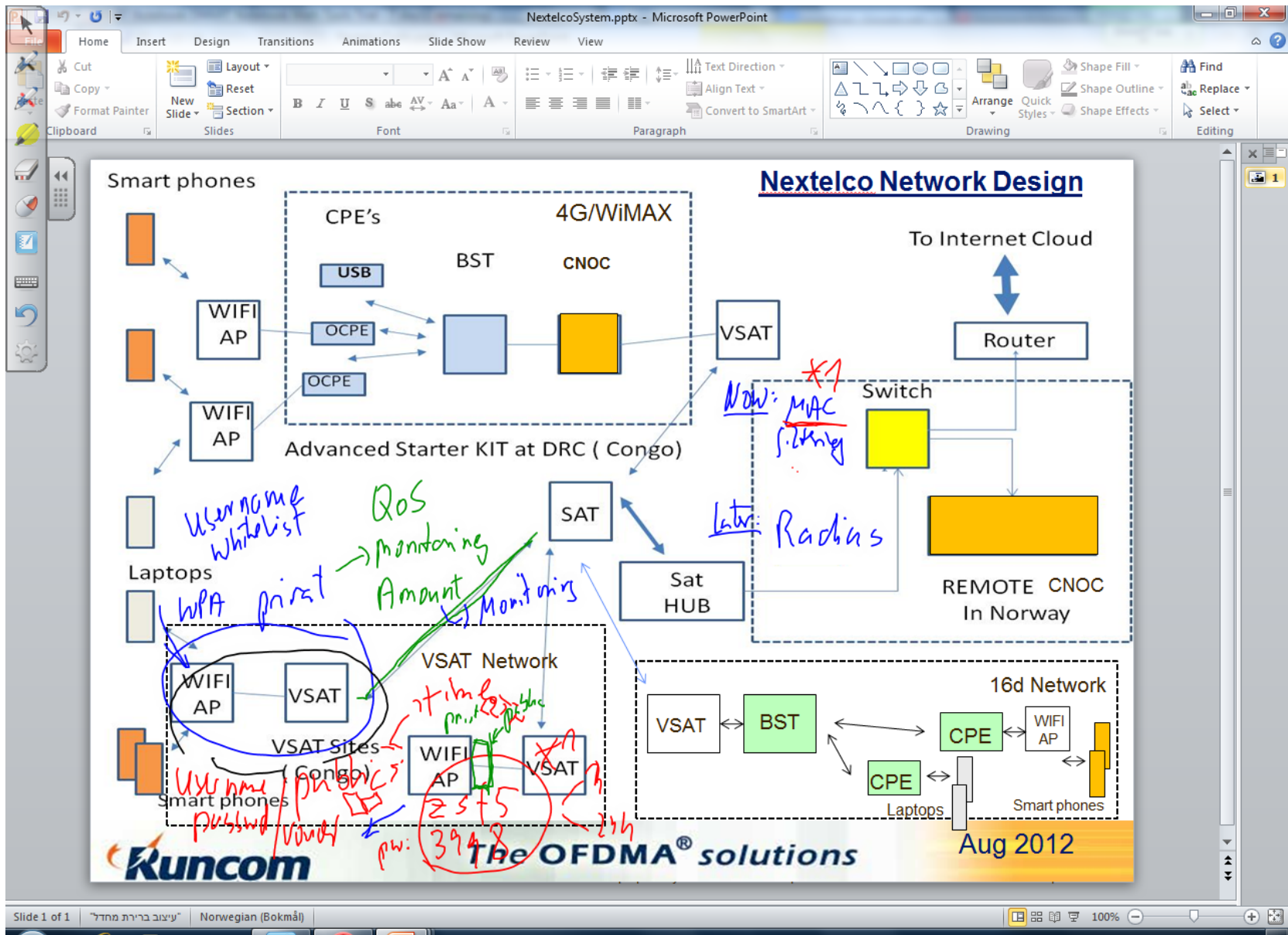
| Owner | Process | Tasks | Human Resource |
|---|--------------------------------------|---|---|
| <p>Organization Board</p> <p>Owner -> owns has executed by</p> <p>consist of</p> | Company and Product Creation | <ul style="list-style-type: none"> Overall Administration Product develop. Process support Company creation Financing | <ul style="list-style-type: none"> Innovator Incubation personnel Company makers Finance people |
| <p>Administration</p> <p>X? includes Finance</p> | Accounting and Control | <ul style="list-style-type: none"> Administrative system Merging accountings Synchronize business | <ul style="list-style-type: none"> Innovator Accountants Revisors |
| <p>Product & Project</p> <p>X R& Develop</p> | Product & Network Design and Project | <ul style="list-style-type: none"> Product & Network Design, field test System Integration Quality Control PO's, Sites acquisitions | <ul style="list-style-type: none"> Innovator Technical/operation stuff Product stuff Incubation Personnel |
| <p>Logistics</p> | Supply Chain Management | <ul style="list-style-type: none"> Order and purchase Good delivery Storage management | <ul style="list-style-type: none"> Innovator Technical Administratif |
| <p>Engineering & Rollout</p> <p>X operational</p> | Network Implementation and Rollout | <ul style="list-style-type: none"> Implementation Engineering Site preparation | <ul style="list-style-type: none"> Implementation people Engineering people |
| <p>Marketing</p> | Service Provision and Distribution | <ul style="list-style-type: none"> Franchise contracts Brand & Communic. | <ul style="list-style-type: none"> Marketors Sales force |
| <p>Sales</p> | Service Commercialisation | <ul style="list-style-type: none"> Apply distribution Retail sales | <ul style="list-style-type: none"> Incubators Local Sales Forces |
| <p>Finance & Admin</p> | Local Finance and | <ul style="list-style-type: none"> Treasury/Finance | <ul style="list-style-type: none"> Administrative staff |

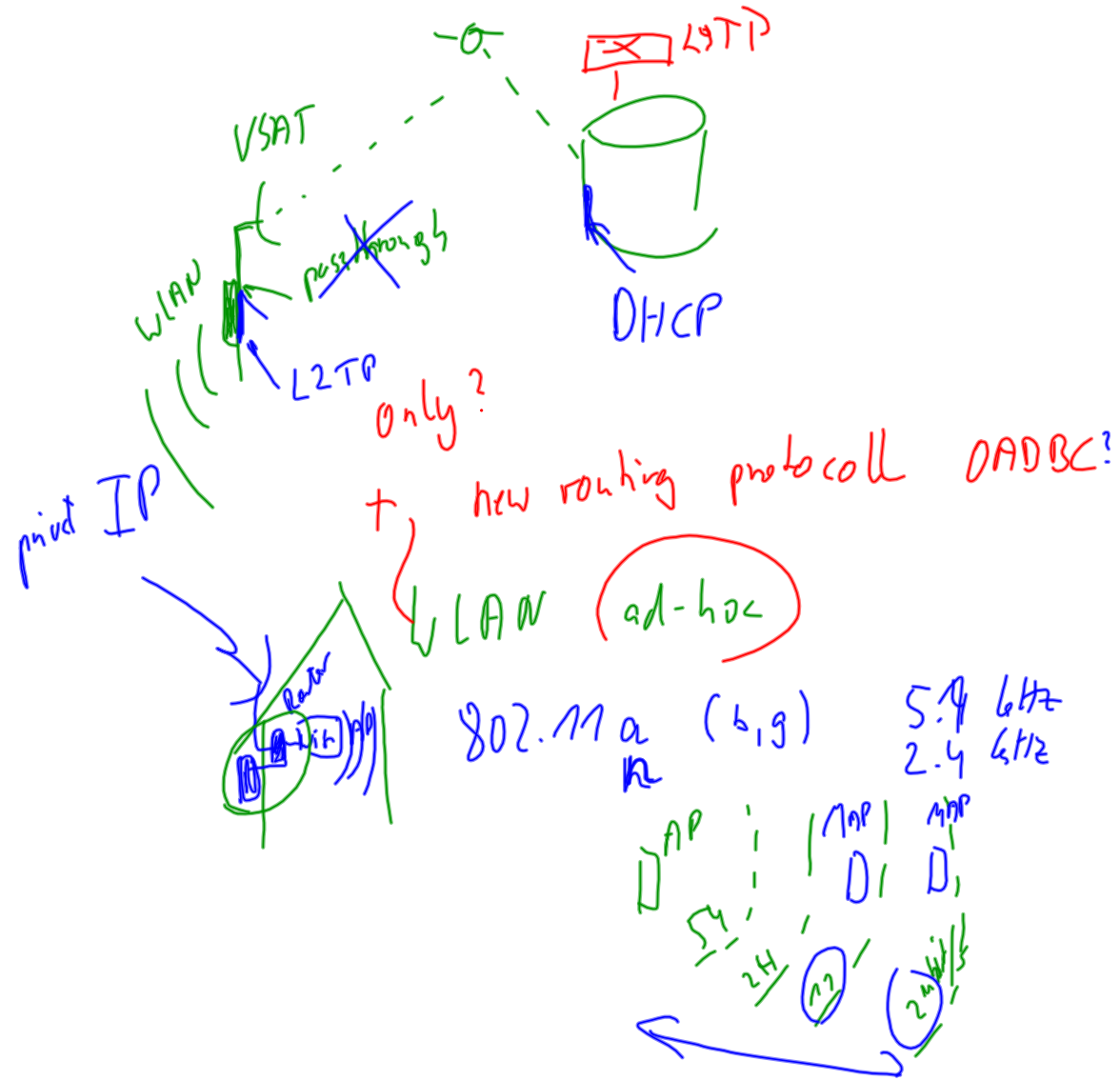
IDEA → TO MARKET

People: CFO, COO, CTO, head of research

Click to add notes

Slide 1 of 1 | Thème Office | Norwegian (Bokmål) | 100%





Opera Education - CWI Downloads Nextelco:TechnologyO... Google Kalender http://cwi.unik.no/ima... Hummer & Kanari / hu...
 Web cwi.unik.no/images/Wifi_Networks-comments.pdf Search with Google

ANTENNAS: OUTDOOR

End-to-end acceptance

- delay
+ packet collision

100 m 100 m 100 m

Mesh Network Hierarchy:

- **Root AP:** RAPs have wired connections to the network.
- **Map AP:** MAPs have wireless connections among themselves and back to the RAP.

60% data
60% signal

$$\frac{60 + 40 + 40}{240}$$

$$43\%$$

60% data
40% signal

TCP

= data + signaling

~ 40% loss/loop

24 Mbps

14 Mbps

9 Mbps

7 Mbps

MAP 10

Update Ready

Education - CWI | Downloads | Nextelco:TechnologyO... | Google Kalender | http://cwi.unik.no/ima... | Hummer & Kanari / hu... | Web | cwi.unik.no/images/Wifi_Networks-comments.pdf | Search with Google

WLAN PLANNING & DESIGN: SITE SURVEY

-80.0dBm | 60 | 10 | -20.0dBm

$P_T = 20\text{dBm}$
 free space 80dB

$P_R = -60\text{dBm}$
 150m
 VOIP

Security = -75dBm
 Laptop: $P_{Sec} = -95\text{dBm}$

544 000 m²
 1750 AP $\sim 150\text{m}^2/\text{AP}$
 $\sim 150\text{m}^2/\text{AP}$

560 dBm VOIP 10-15m radius
 + location tracking

7 AP with 4 antennas

17 / 20

Update Ready

Opera browser window showing a MediaWiki page for **Susana Rodriguez de Novoa**. The browser tabs include "Susana Rodriguez de N...", "Downloads", "Nextelco:TechnologyO...", "Google Kalender", "http://cwi.unik.no/ima...", and "Hummer & Kanari / hu...". The address bar shows "cwi.unik.no/wiki/Susana_Rodriguez_de_Novoa".

The page header includes navigation links: JOSEF.NOLL, MY TALK, MY PREFERENCES, MY WATCHLIST, MY CONTRIBUTIONS, LOG OUT. A search bar is present with a "Go" button and a "Search" button.

The main content area displays the user profile for **Susana Rodriguez de Novoa**. A blue circle highlights the user information box on the right side of the page.

| | |
|-------------------|---------------------|
| First Name | Susana |
| Name | Rodriguez de Novoa |
| ph: | |
| m: | +47 988 34 187 |
| e: | zarofinia@gmail.com |
| LinkedIn: | |
| Company | |
| Keywords | |

Below the user information box, there is a section for **Major Keywords from activities** with the following text: CAPWAP IEEE 802.11 LWAPP Mesh Wireless Security.

The main content area also includes:

- A red "150px" placeholder image.
- A note: "this page was created by Form:User, and can be edited by Special:FormEdit/User/Susana Rodriguez de Novoa".
- A section titled "Susana Rodriguez de Novoa has given the following lectures:" with a sub-item: "WLAN communications (UNIK9700 UNIK4700)".
- A warning icon.
- A section titled "Susana Rodriguez de Novoa is involved in:" with a sub-item: "Susana Rodriguez de Novoa (for Susana Rodriguez de Novoa)".
- An "About" section with an "[edit]" link.
- A note: "Susana and Josef are discussing on courses: Course-Discussion".
- A "Category: User" label.

The left sidebar contains a navigation menu with categories like "Forms (create or edit)", "External links", "Support Forms", and "Toolbox".

The bottom status bar shows "Update Ready".