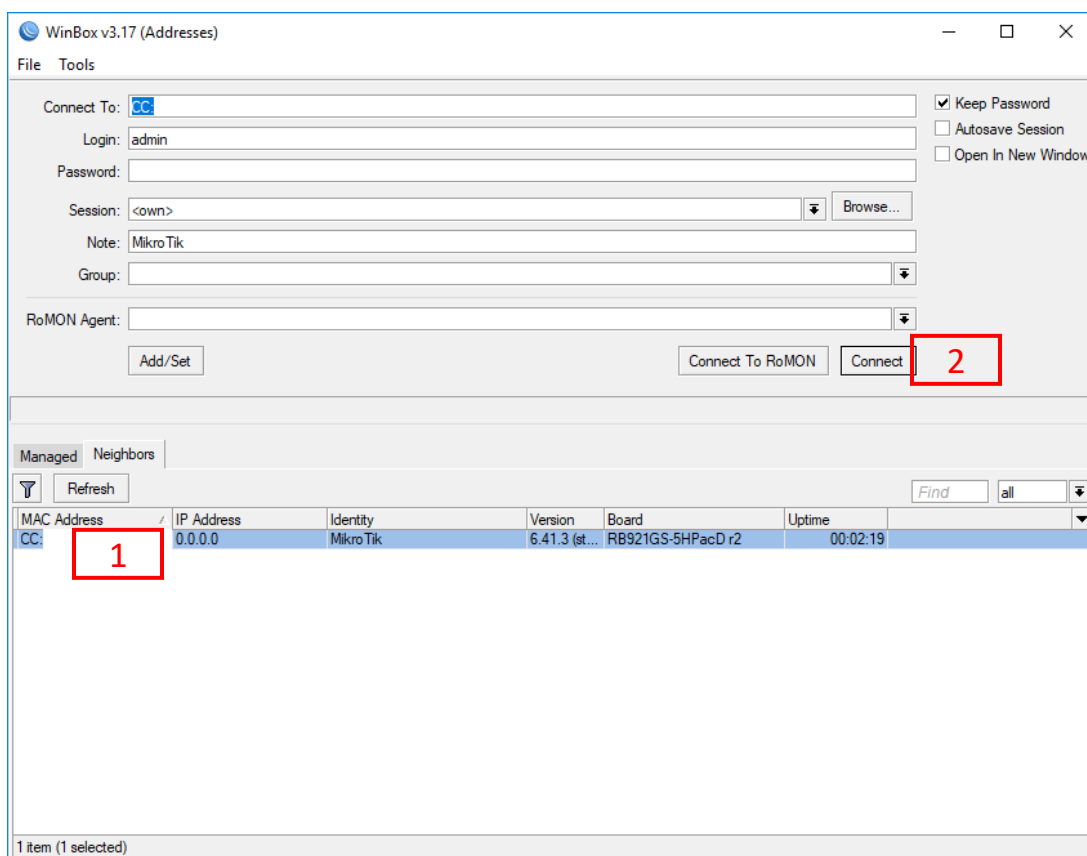


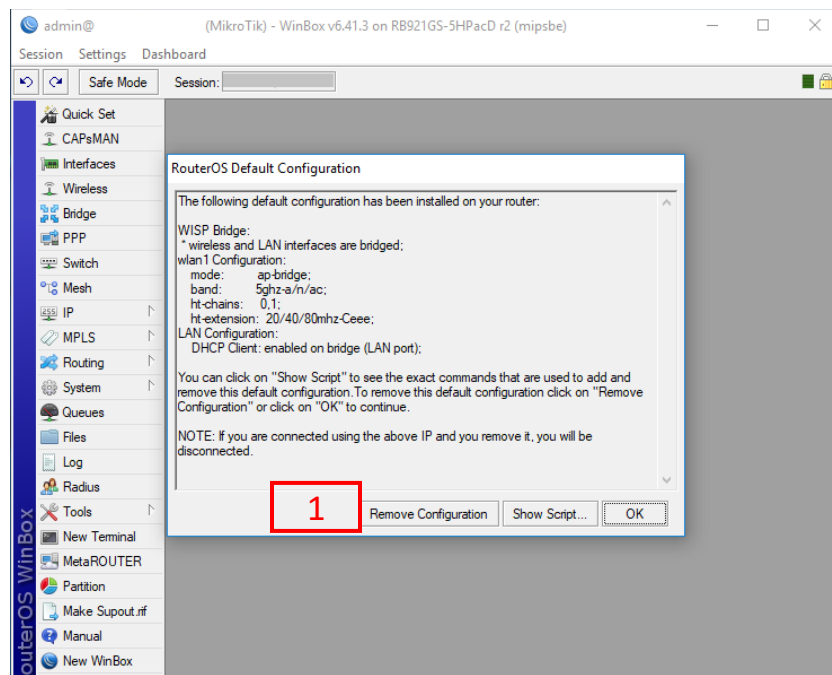
Wireless Edge Network Configuration (connected to P2P uplink)

This document provides step by step guide to configure an edge wireless access point (RBwAPG), which is connected to a point-to-point wireless uplink (RB921GS-5HPacD-15S (Access point) and RBSXTsq5nD (CPE)).

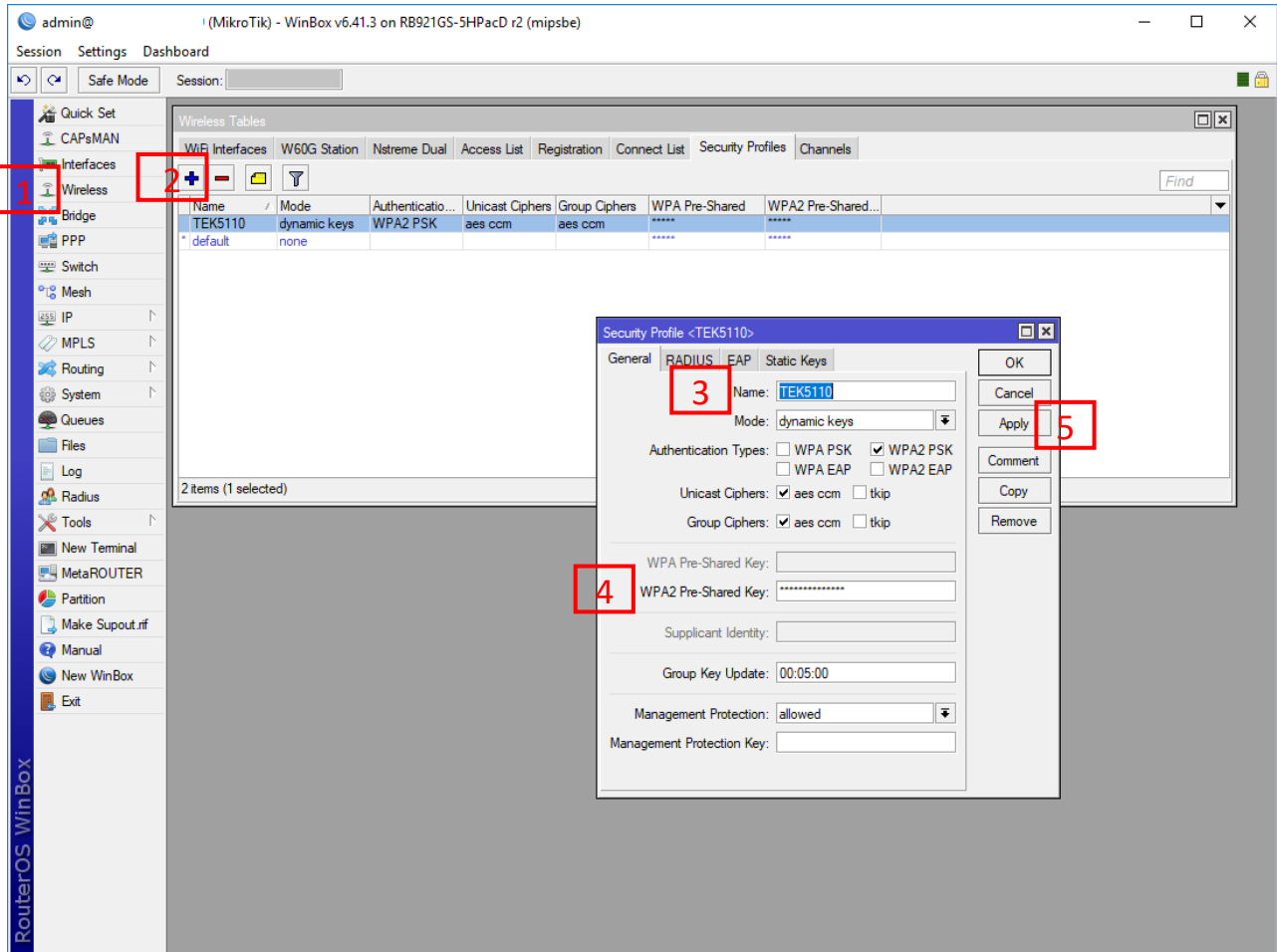
1. Connect to RBwAPG with Winbox (use MAC address of RBwAPG in Winbox). Use following default “admin” username and empty password to connect.



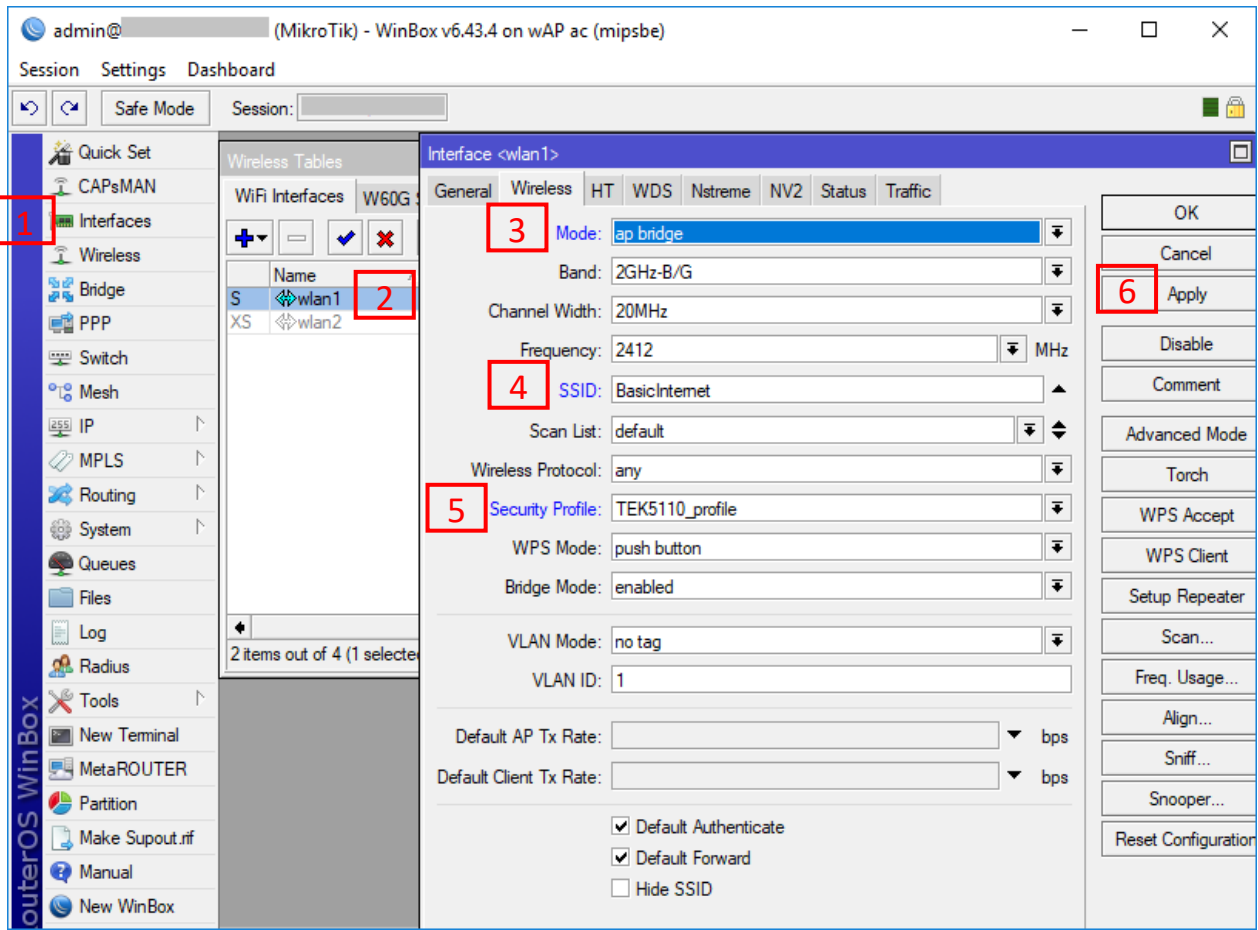
2. Please remove default configuration after login to continue with clean slate.



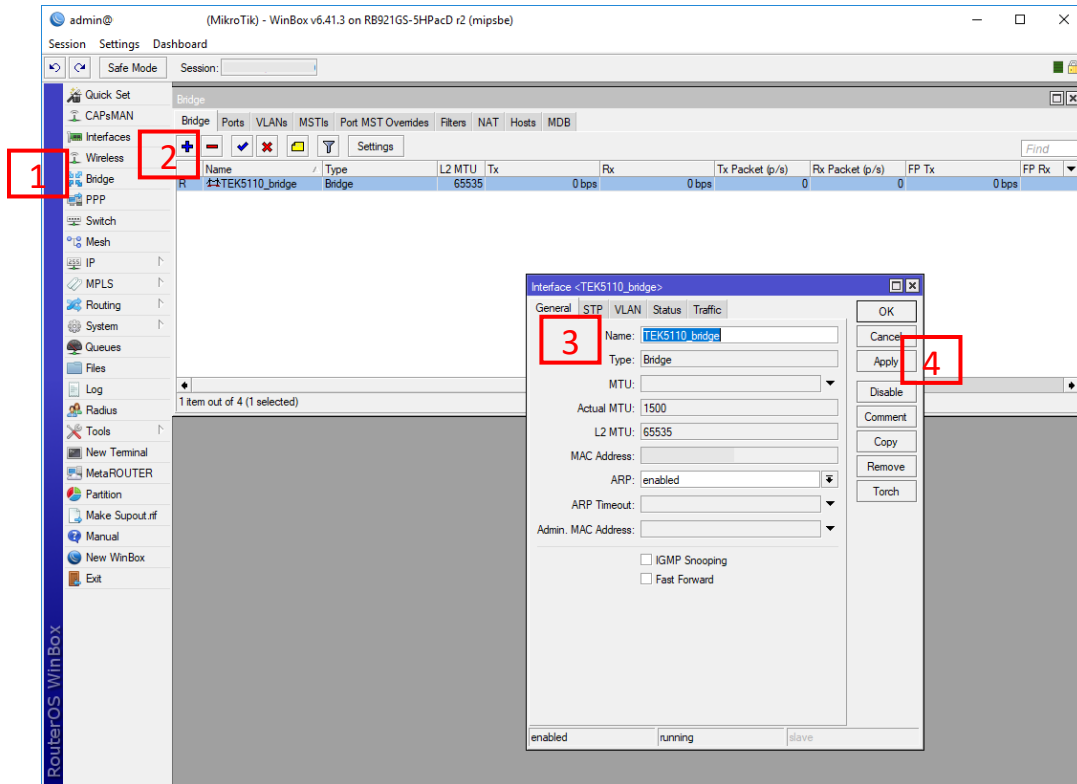
3. Open Wireless tab in order to configure access point so that other clients can connect to RBwAPG. First, we need to create a new security profile to authenticate wireless clients.



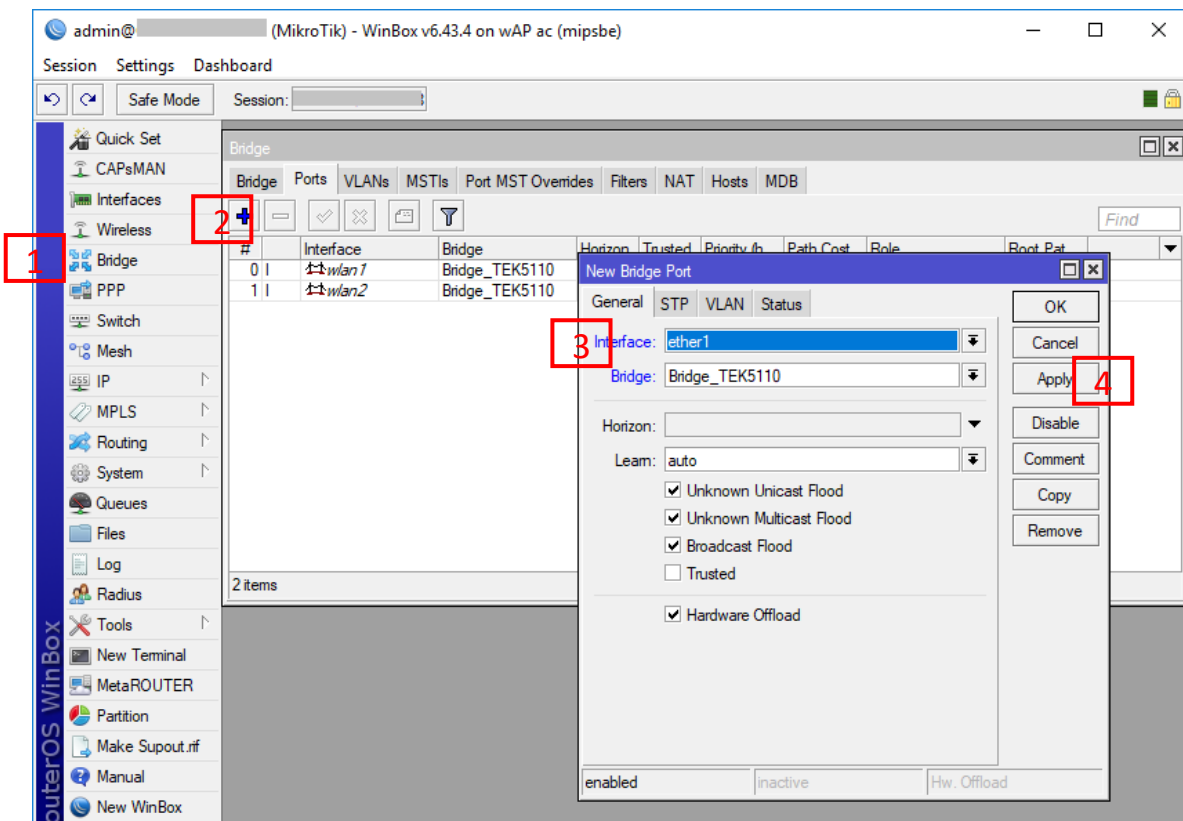
4. Then, enable “wlan1” and “wlan2” interface and configure wireless interface to be access point bridge. In the Wireless tab, select an SSID e.g. “BasicInternet” and select security profile “TEK5110” that you have created in previous step.



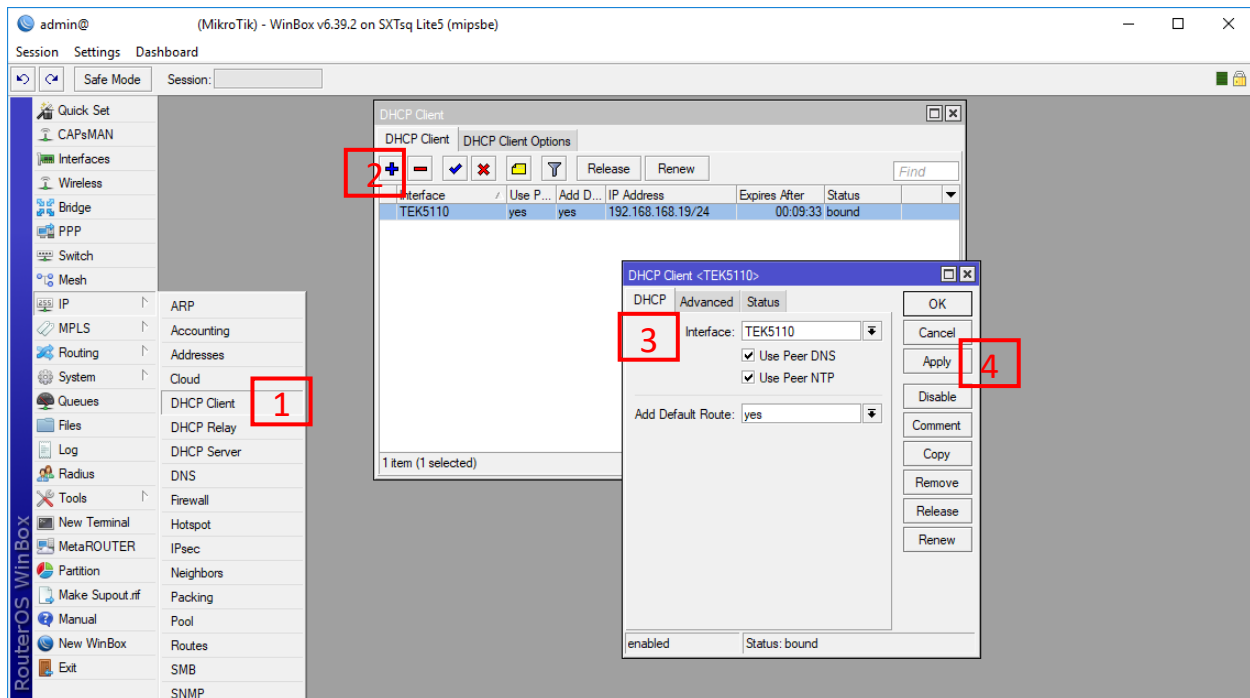
- Now, create a bridge interface “TEK5110” in order to connect wireless and Ethernet interfaces together.



- Then, add “wlan1”, “wlan2” and “ether1” to the bridge interface that you have created in previous step.



1. Finally, configure a DHCP client for bridge interface “TEK5110” so that we can connect to the RBwAPG remotely from RB921GS network.



Now, our edge wireless access point is connected to our point-to-point wireless uplink so clients can connect to our wireless infrastructure. Of course, you can use MAC address reservation option in the RB921GS DHCP server in order to lease specific IP addresses to each device in the wireless infrastructure.