

Installation for Tumaini School

Usage

If everything is nicely connected and up and running, the user can connect to Wifi using SSID «BasicInternet».

This leads to the welcome page, which is always available from <http://acces.basicinternet.org>

Here you have the different choices:

- Vodacom e-learning platform e-Fahamu, free to use for everyone
- School server yeboo.com - your local server with content which you can configure and share
- Energy Monitoring - a Smappee installation to monitor energy, use the homeassistant app and connect to energy.yeboo.com (port 80)¹
-

Click for FREE INTERNET ACCESS!

Voucher access for Internet

Login Form

Username	<input type="text"/>
Password	<input type="password"/>
<input type="button" value="Login"/>	

[Vodacom e-learning](#)

[School server Yeboo](#)



[Energy Monitoring Tumaini](#)

[BasicInternet.org](#)

[Google search](#)



Welcome to our community, available on this school/community server.

The server is available in English, [Kiswahili](#) and [Swahili](#)

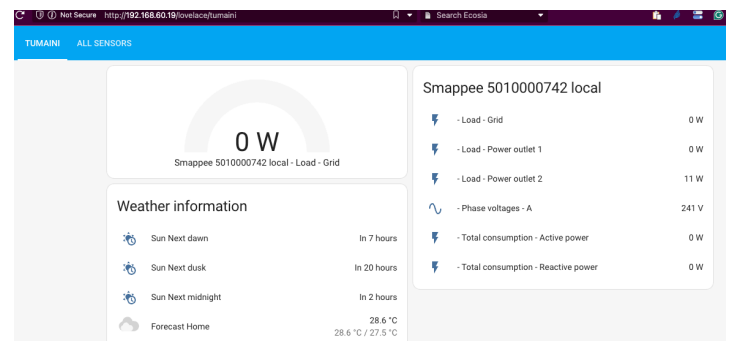
We'll put together a set of information, which you can use for free. Ask you

- [Energy information](#) provided through the SES&A project

Cabling

You have the following units:

- (Antenna) Antenna for reception of mobile network, connects from Port 1 to Port 1 of the LNCC
- (LNCC) hAP Router providing BasicInternet Wifi. Connects to the (Antenna) on Port 1 with LNCC Port 2-4 for Genius, YebooRPI and EnergyRPI. Switch 5 can be used to a local Switch
- (YebooRPI), and if you need to monitor, to a PC connects to the LNCC on Port 2-4
- (Genius) the Smappee Genius collects the data from the Smappee gateway, and provides them to the home assistant through 192.168.60.18, connects to the LNCC on Port 2-4
- (EnergyRPI) is the squared Raspberry Pi 4, which has <http://energy.yeboo.com> for the energy monitoring - use the Home Assistant App for monitoring, or the Web page - connects to the LNCC on Port 2-4
- (YebooRPI) is the Raspberry 400, with the yeboo.com Web page and the local Nextcloud at yeboo.com:8080

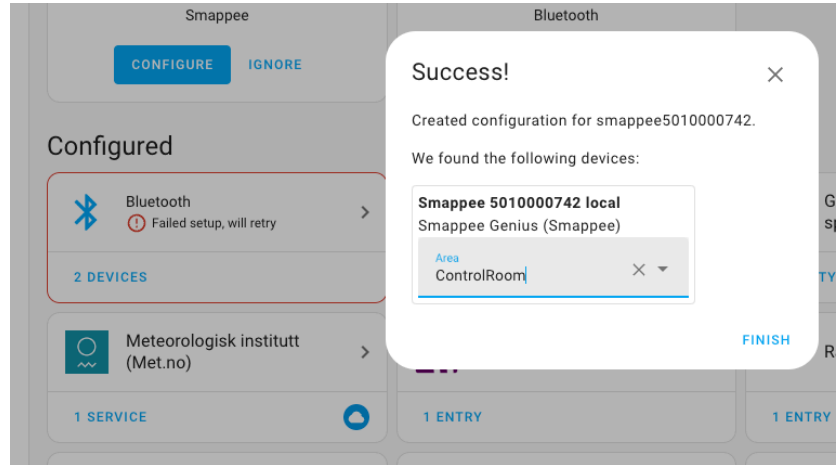
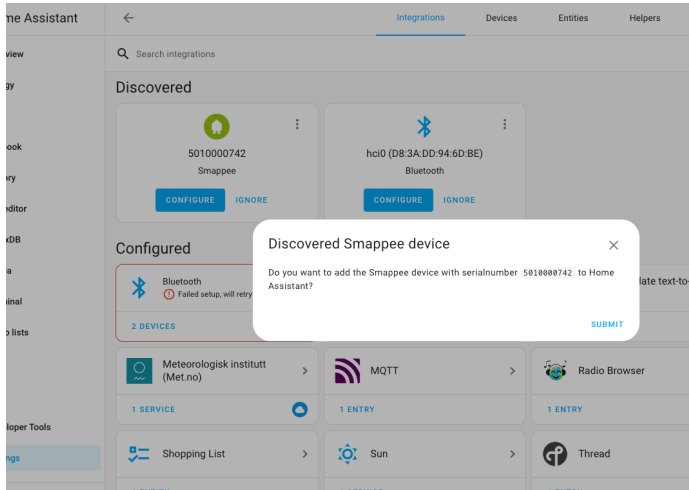


Smappee installation

If Smappee does not come up in the homeassistant interface, then

¹ Troubleshooting, see last page - login is: its, passwd: ITS-energy2024

- take out the power/data cable and reboot Smappee Genius - that will reset Smappee and restart. Wait a bit, and see if Smappee Genius get's green (IP address found) and is integrated in HomeAssistant
- If that does not help, open HomeAssistant: <http://energy.yeboo.com> and go to Settings = Integrations = Smappee = remove the integration
- Then, reboot Smappee and wait a bit, and in HomeAssistant under Notifications you will see «new devices available» - Integrate Smappee



Troubleshooting Energy Monitoring

If energy.yeboo.com does not come up, you can connect by cable to one of the free router ports and a display cable to see the results of the Raspberry PI on a screen.

Through a browser you have access to energy monitoring using <http://192.168.60.19>

- Under Settings = System = Logs you see error messages

For experts only:

- if the error is related to reverse proxy, use an ssh to connect: `ssh its@192.168.60.19` (passwd: ITS-energy2024)
- the you can edit the `configuration.yaml` file
- connect to RPI, login to get the shell interface, then `find -iname configuration.yaml`
- `vi /homeassistant/configuration.yaml`
- exit the vi editor with `ESC :wq`
- the «reboot now» the machine